

CD 14

Selskabskjoler



30 modeller

Beskrivelser af arbejdsgang på dansk

Selskabs- og aftenkjoler

Personal Pattern — Perfekt Pasform

Et skridt foran i modesyning

For flere informationer og nyheder klik ind på

www.pppp.dk

CD SNITMØNSTRE — SÅ NEMT ER DET:

- Sæt cd'en i computeren — programmet starter op af sig selv
- Indtast personlige mål:
 - I højde
 - II brystvidde
 - III taljevidde
 - IV hoftevidde
- Vælg model
- Print snitmønstret ud fra din egen printer
- Sæt arkene sammen
- Klip og sy

God fornøjelse

Olga Christensen

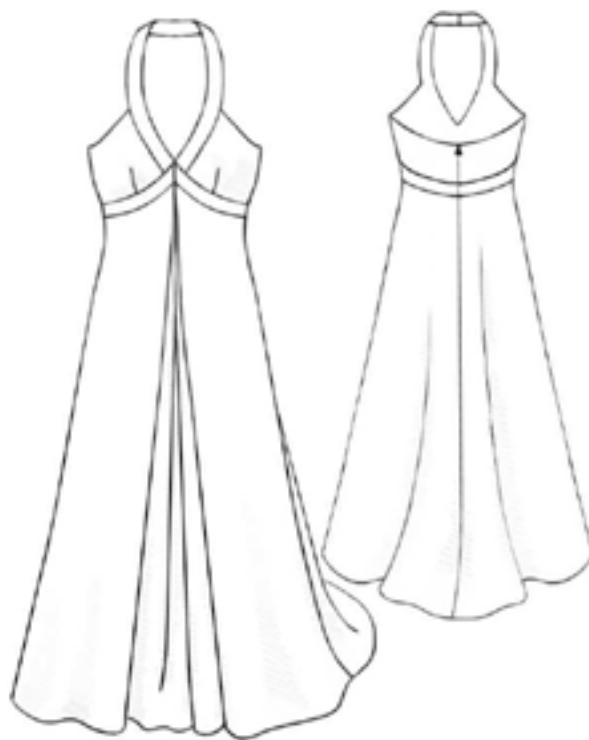
5188



5189



5190



5191



5192



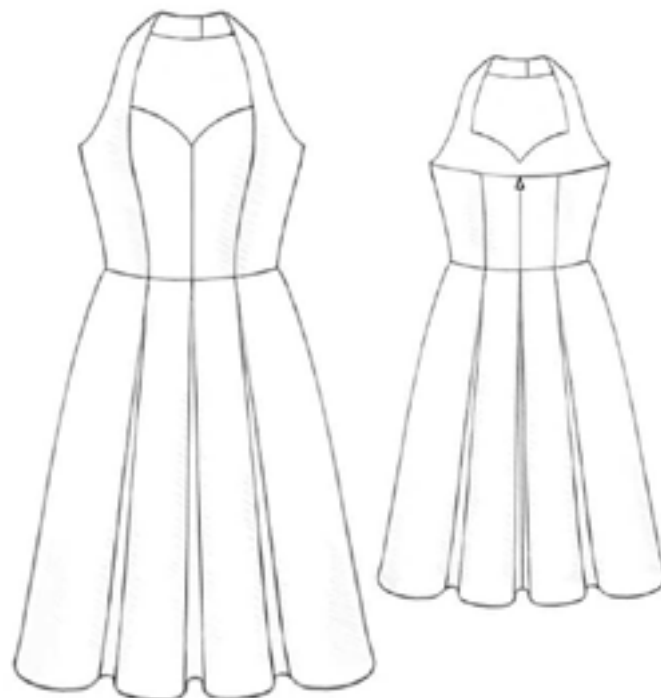
5193



5194



5195



5196



5197



5198



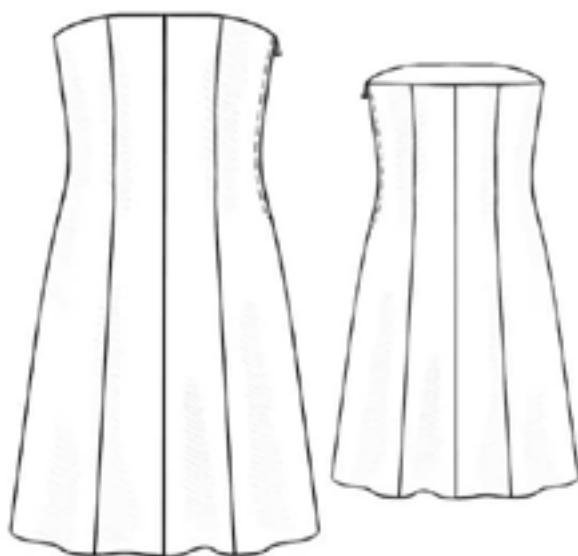
5199



5200



5201

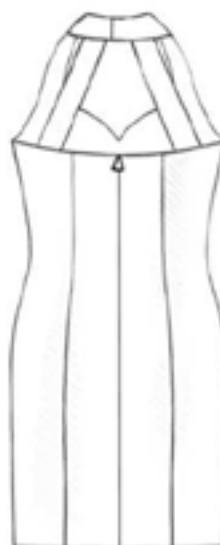




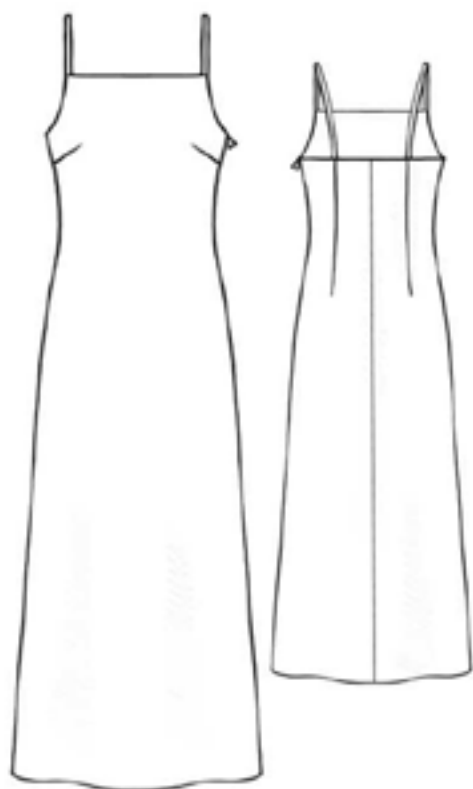
5202



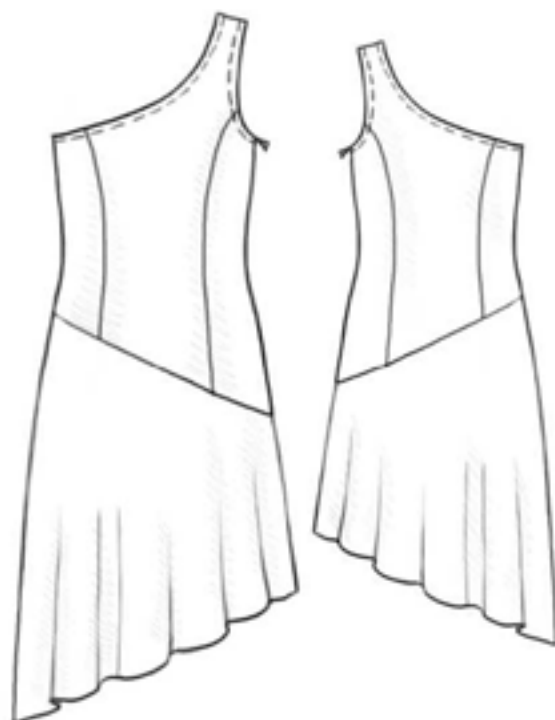
5203



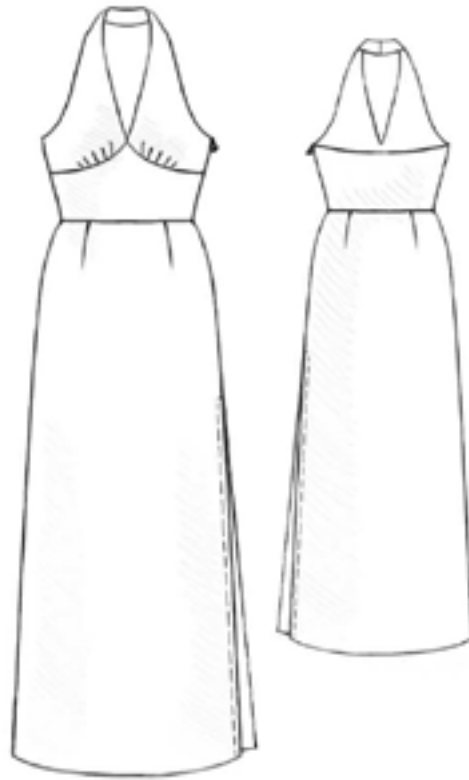
5204



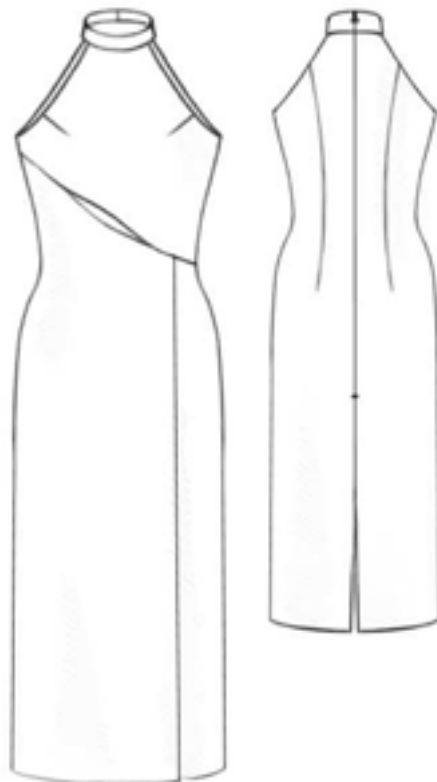
5205



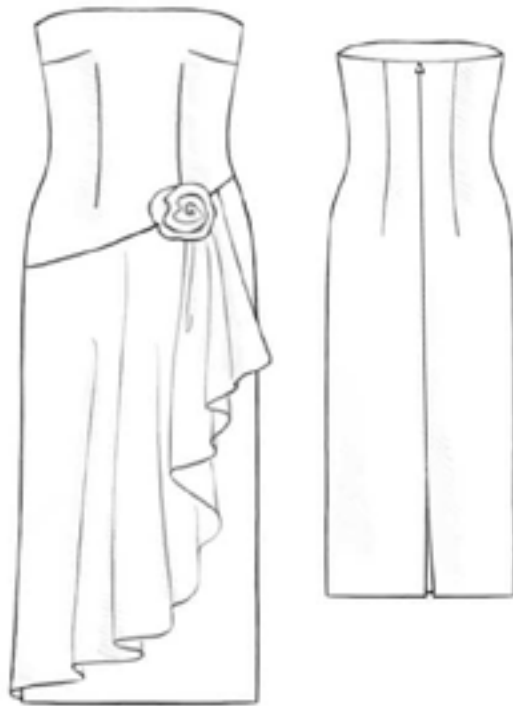
5206



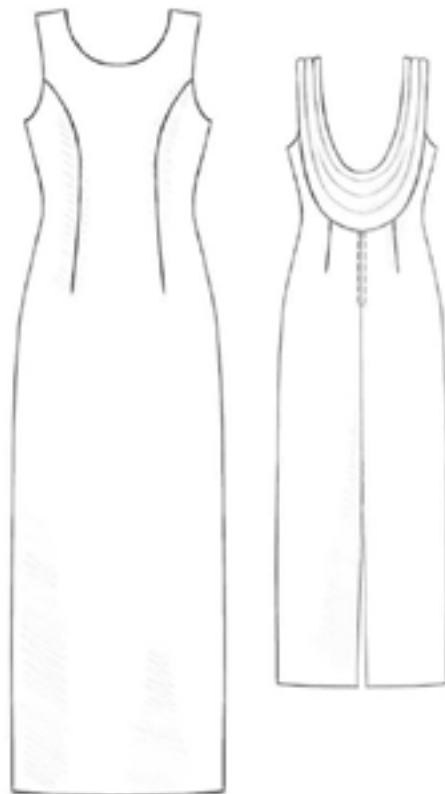
5207



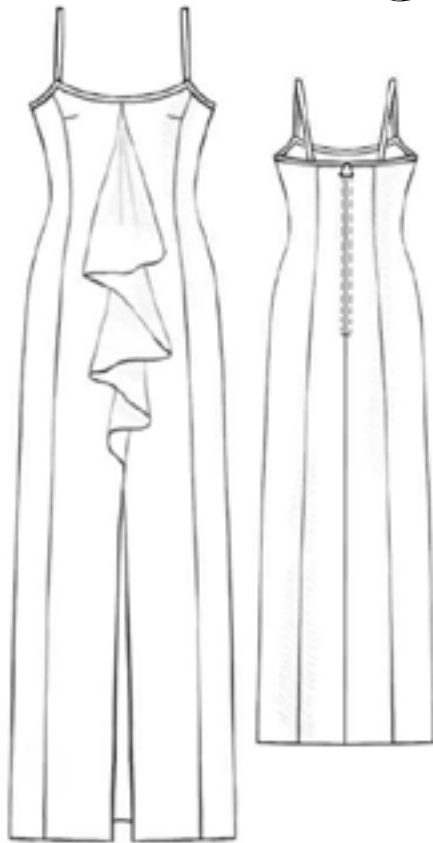
5208



5209



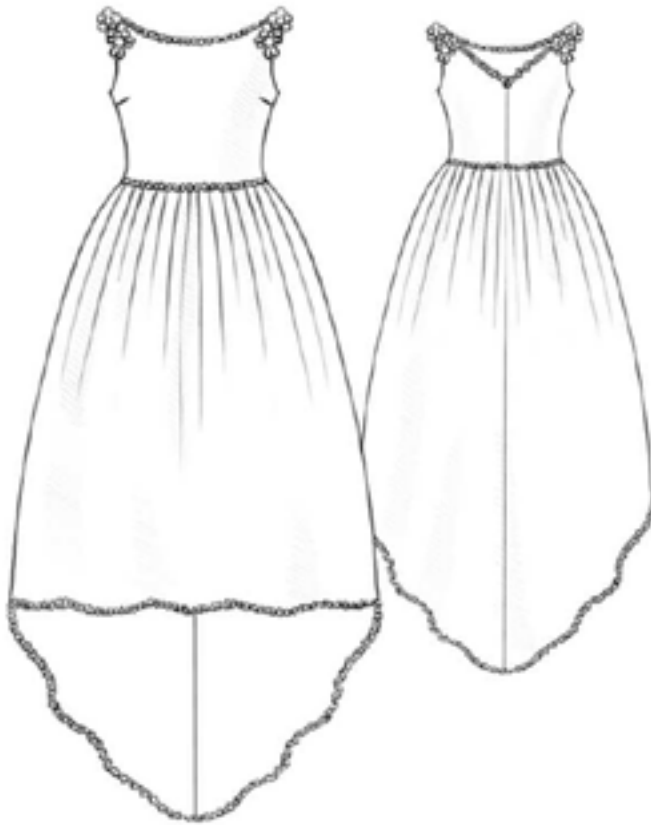
5210



5211



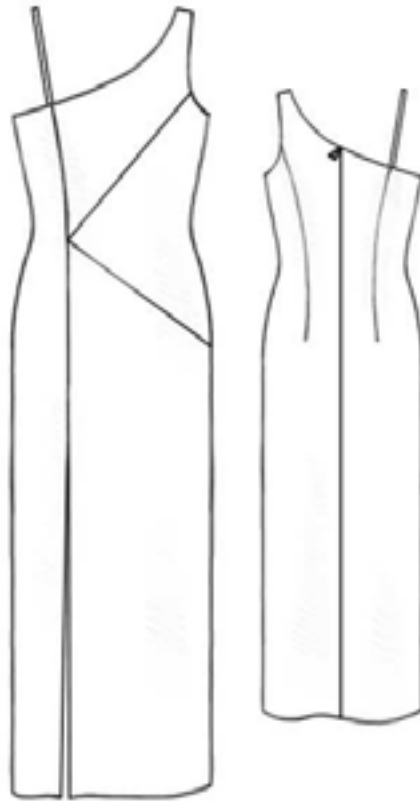
5212



5213



5214



5215



5216



5217

