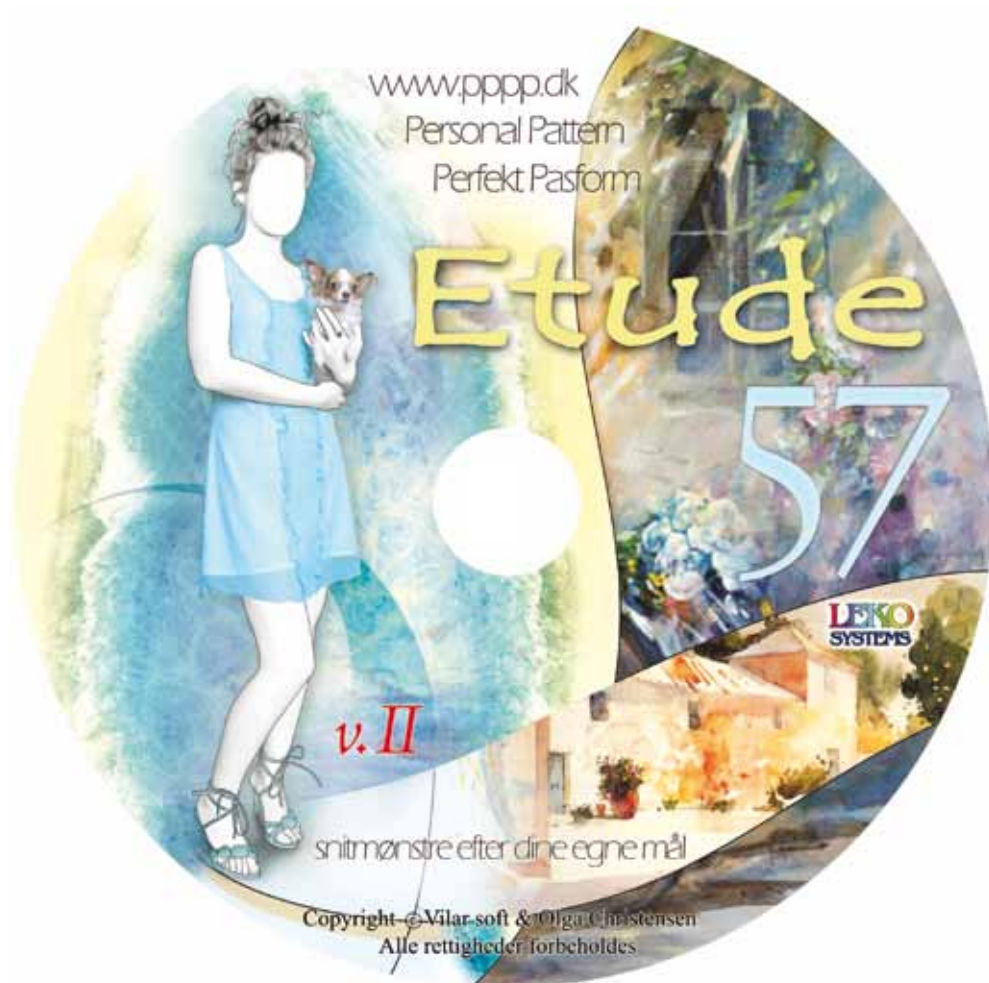


# CD 57

## *Etude*



15 modeller af hverdagstøj

Kjoler, bluser, tunikaer, nederdele, Jersey-bluser, jakke, top

Beskrivelser af arbejdsgang på dansk

*v. II* - personal patterns med flere faciliteter

## Personal Pattern — Perfekt Pasform

*Et skridt foran i modesyning*

For flere informationer og nyheder klik ind på

[www.pppp.dk](http://www.pppp.dk)

*v. II med flere faciliteter:*

*Udskrivning af alle mønsterdelene på en gang  
Tilrettelæggelse af mønsterdelene på stof  
Beregning af stofforbrug*

### CD SNITMØNSTRE — SÅ NEMT ER DET:

- Sæt cd'en i computeren — programmet starter op af sig selv
- Indtast personlige mål:
  - I højde
  - II brystvidde
  - III taljevidde
  - IV hoftevidde
- Vælg model
- Print snitmønstret ud fra din egen printer
- Sæt arkene sammen
- Klip og sy

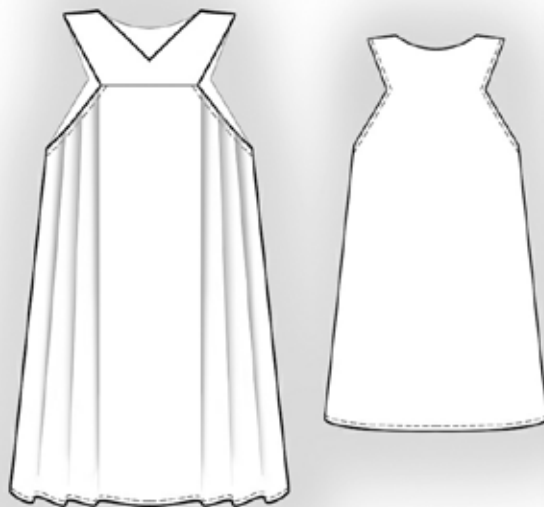
God fornøjelse

*Olga Christensen*

5822

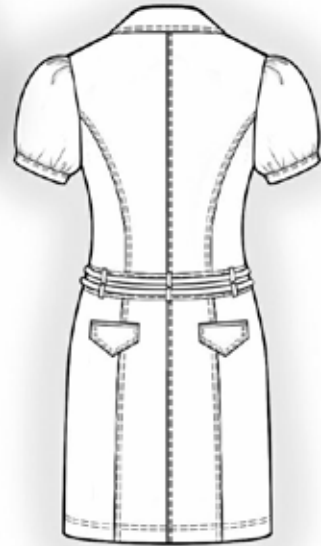
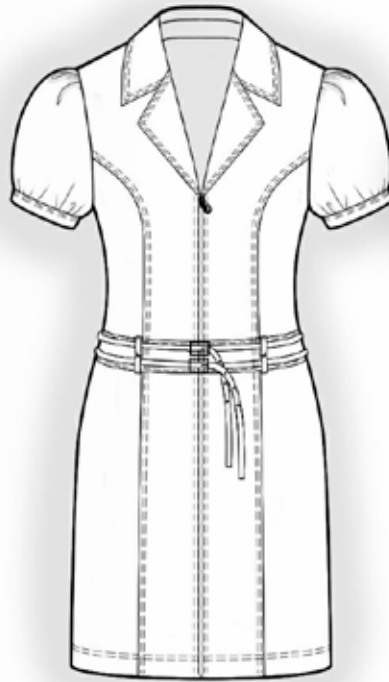


5823

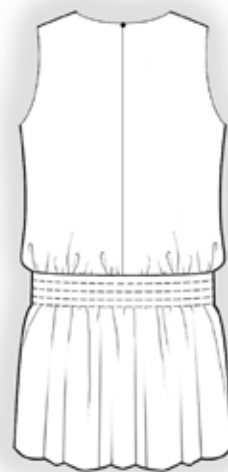
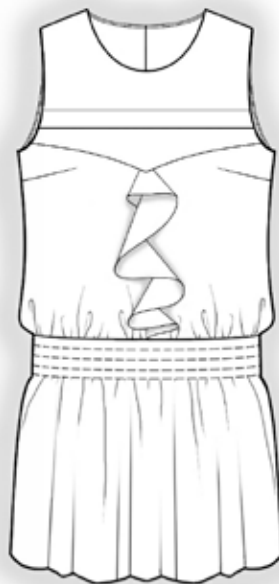




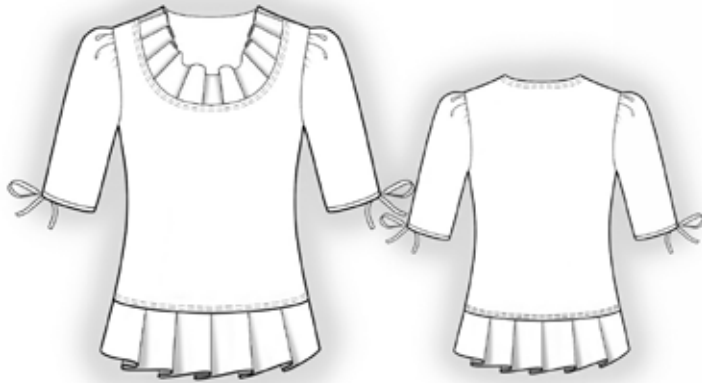
5824



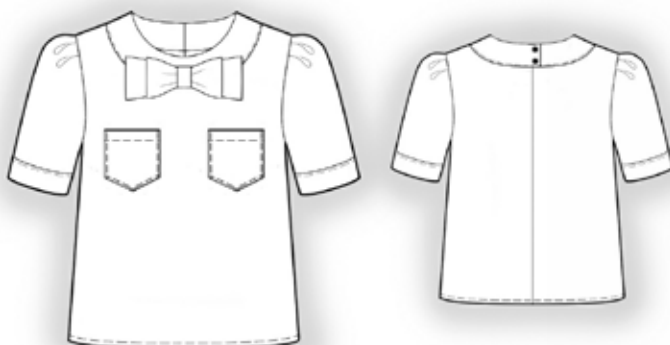
5848



5856



5857





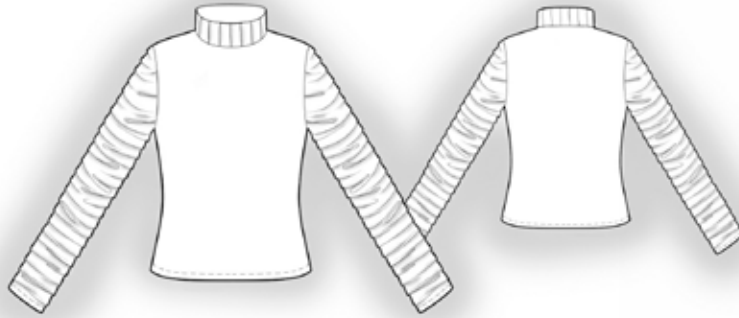
5858



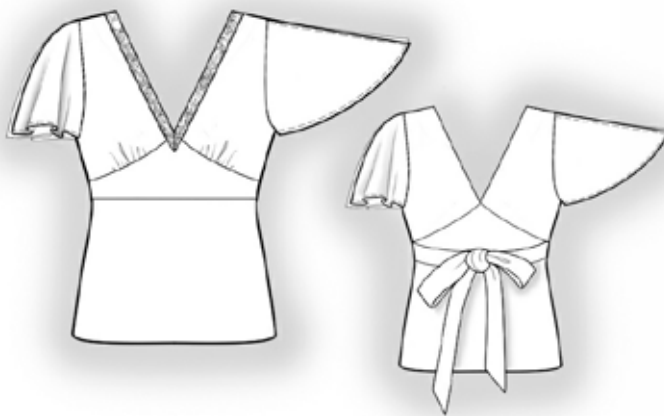
5864



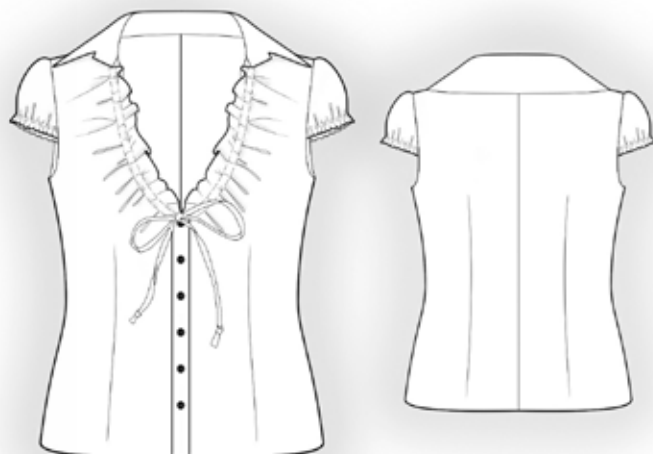
5866



5868



5869

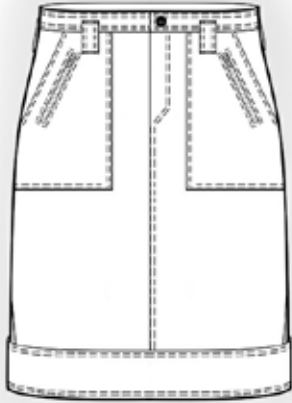


5870





5871



5876



5909

