

If the pattern has a double line around it, the seam allowances are included.

Note: By default, seam allowances are NOT included (single line) and will need to be added when laying out and cutting details.

Seam Allowance: 1 cm on all seams; hem guidelines are printed on pattern.

Important! Please print all the paper patterns and lay them out at the width of fabric you plan to use (usually from 90 to 150 cm) to see how much fabric you will need.

Don't forget to take into account pieces to be duplicated or cut on a fold. When sewing the garment, pay attention to notches. They must match up with corresponding pieces.

2024 Jumpsuit with High Waist

Recommendations on fabric: thin well draping fabrics of natural or mixed fibers..

You will also need: blind zipper.

CUTTING:

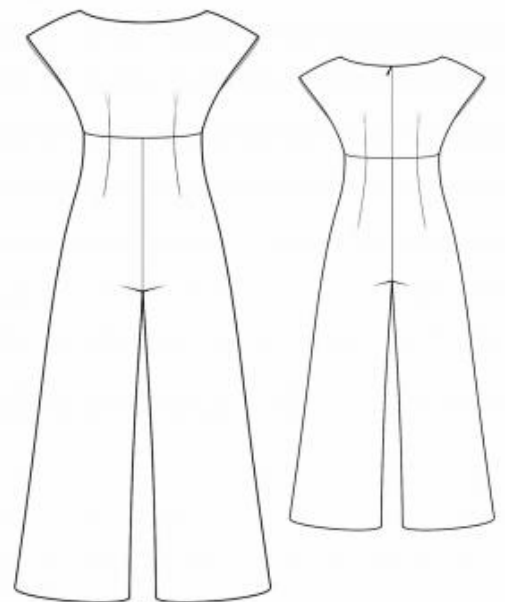
The word, “beam” used on some patterns means “straight of grain”. Some pieces will be cut on the fold, this is noted on the pattern piece. Mark all notches and other design features such as darts, pleats etc. from the pattern onto your fabric.

Seam allowances: all seams – 1 cm, hem of the garment – 2 cm.

Main fabric:

1. Back part - 4 details
2. Front part – 2 details
3. Front half – 2 details
4. Back half – 2 details

Top part of the garment is double. Lining is cut of top fabric.



INSTRUCTIONS:

1. Mark and sew the darts on the back and front trouser pieces. Press the darts toward the center.
2. Sew, serge, and press the side and leg seams.
3. Sew the center seam of the trousers from the top front edge down to the back notch for the zipper. Serge and press the seam open.
4. Make and secure pleats on the front and back pieces along the marked lines. Press the pleat depths toward the center of each piece.
5. Sew and serge the side and shoulder seams of the top part. Clip the side seam near the marker. Press the shoulder and side seams toward the back.
6. Serge the center back edges.
7. Attach the top part of the garment to the bottom part. Serge and press the seam downward. Press the seam allowance for the closure along the center seam.
8. Position the zipper under the seam allowances so that the zipper teeth are hidden, and stitch it in place.
9. Sew the lining pieces the same way as the top pieces.
10. Place the lining and garment right sides together and stitch the neckline of the front and back pieces. Topstitch the seam allowance on the lining 0.2 cm from the seam. Stitch the armholes in two steps: first the upper edge, then the lower edge. Turn the lining to the wrong side and press. Serge the lower edge of the lining. Hand stitch the center back seam allowances of the lining to the zipper tape. Sew the lower edge of the lining to the seam allowance of the top part.
11. Press the hem allowance to the wrong side, fold under, and topstitch.

Congratulations, your jumpsuit is ready! :)