

If the pattern has a double line around it, the seam allowances are included.

Note: By default, seam allowances are NOT included (single line) and will need to be added when laying out and cutting details.

Seam Allowance: 1 cm on all seams; hem guidelines are printed on pattern.

Important! Please print all the paper patterns and lay them out at the width of fabric you plan to use (usually from 90 to 150 cm) to see how much fabric you will need.

Don't forget to take into account pieces to be duplicated or cut on a fold. When sewing the garment, pay attention to notches. They must match up with corresponding pieces.

2025 Sleeveless Dress with Decorative Draping

Recommendations on fabric: lightweight, well-draping fabrics of natural or mixed fibers (chiffon, crepe-chiffon).

You will also need: lining; invisible zipper.

CUTTING:

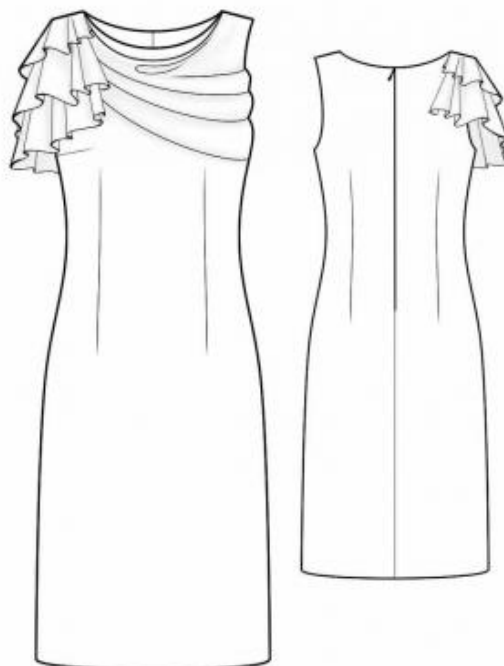
The word, "beam" used on some patterns means "straight of grain". Some pieces will be cut on the fold, this is noted on the pattern piece. Mark all notches and other design features such as darts, pleats etc. from the pattern onto your fabric.

Seam allowances: all seams – 1 cm; on top and lower edges of draping – 2 cm; on side and lower edges of flounces – 0 cm; on hem of the dress – 3,5 cm.

Main fabric:

Darts: The fold of the dart is always pressed toward the center of your garment, or down toward the hem.

1. Back – cut 2



2. Front – cut 1
3. Draping – cut 1
4. Small flounce – cut 2
5. Medium flounce – cut 2
6. Large flounce – cut 1

Lining:

1. Back – cut 2
2. Front – cut 1

INSTRUCTIONS:

Attention: The legend is on the right side of the patterns. When cutting with the "right side down," be sure to place the draping and flounce pattern pieces on the fabric with the legend facing down as well.

1. Sew the waist and bust darts on both the back and front. Press the waist darts toward the center and the bust darts toward the hem.
2. Serge the lower and top edges of the draping, press to the wrong side, and topstitch.
3. Pin the draping to the dress, wrong side of the draping against the right side of the dress, and baste along the armhole edge and down the side seam to the darts. Create small pleats along the unsewn edge of the draping to match the length of the shoulder seam, and baste in place.
4. Sew the shoulder seams, serge, and press the seams toward the back.
5. Sew the darts on the lining and press them. Sew the shoulder seams of the lining. Pin the lining to the dress with right sides together, then sew the neckline and armhole edges. Clip the curves. Sew the side seams of both the fabric and lining in one continuous stitch. Turn the dress right side out by pulling the back pieces through the shoulder tunnels. Press. (Refer to a Clean Finish Bodice Method tutorial for guidance.)
6. Serge the center back edges of the fabric separately. Sew the center back seam from the zipper mark to the hem. Insert the zipper. Sew the center back seam of the lining, leaving an opening for the zipper. Press the seam open. Slipstitch the lining to the zipper tape.
7. Serge the lower edge of the garment and lining (the lining should be trimmed 2 cm

shorter than the fabric). Turn the hem allowance to the wrong side and topstitch.

8. Serge the side and lower flounce edges with a narrow rolled hem. Sew the smaller flounces together, press the seam allowances open, and serge. Sew the middle flounces together, then attach the large flounce so it faces forward and sits at the bottom. Press the seam allowances open and serge. Pin the flounces to the shoulder seam: three flounces should face the front, and two should face the back. Topstitch the flounces into the shoulder joining seam.
9. Cut a bias strip from the main fabric, 4 cm wide and the length of the shoulder seam plus 3 cm. Sew the long sides of the strip together with right sides facing, then turn right side out. Press so that the seam is centered. Cover the topstitched flounce seam with the strip, turn the raw ends under, and secure in place.

Congratulations, your dress is ready! :)