

If the pattern has a double line around it, the seam allowances are included.

Note: By default, seam allowances are NOT included (single line) and will need to be added when laying out and cutting details.

Seam Allowance: 1 cm on all seams; hem guidelines are printed on pattern.

Important! Please print all the paper patterns and lay them out at the width of fabric you plan to use (usually from 90 to 150 cm) to see how much fabric you will need.

Don't forget to take into account pieces to be duplicated or cut on a fold. When sewing the garment, pay attention to notches. They must match up with corresponding pieces.

2028 Jumpsuit with waterfall neckline

Recommendations on fabric: thin well draping fabrics of natural or mixed fibers approx. 2.5 m (sizes 32-54) with a fabric width of 150 cm.

You will also need: invisible zipper.

CUTTING:

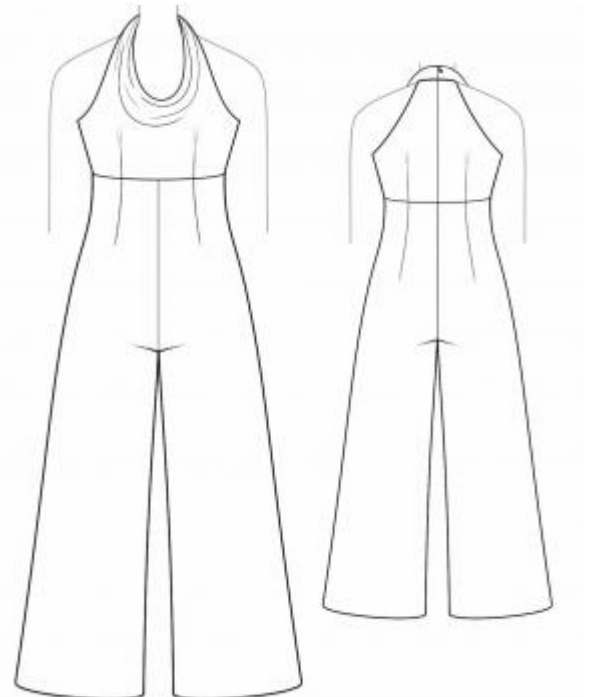
The word, "beam" used on some patterns means "straight of grain". Some pieces will be cut on the fold, this is noted on the pattern piece. Mark all notches and other design features such as darts, pleats etc. from the pattern onto your fabric.

Seam allowance: all seams – 1 cm, hem of the garment – 2 cm.

Main fabric:

1. Back part - 2 details
2. Front part – 1 detail
3. Front half – 2 details
4. Back half – 2 details

INSTRUCTIONS:



1. Mark and sew darts on the back and front halves of trousers. Press darts towards center.
2. Sew, serge and press side and leg seams.
3. Sew the middle edge of trousers from top front edge up to back notch for zipper. Serge and press apart.
4. Make and fasten plaits on details of front part and of back part according to marked lines. Press darts depth towards center detail.
5. Serge, turn armhole edges of back part inside and topstitch. Sew side seams, leveling them from the hem line. Serge seams and press towards the back part.
6. Stitch neckline edge of back part to one-piece stand-up part of collar. Serge, serging armhole edge of front part at the same time. Seam press to stand-up part of collar, turn front part armhole edge and topstitch.
7. Serge the central edges of the back part and upper edge of front part.
8. Stitch the top part of the garment to the lower part. Serge and press downwards. Press seam allowance for closure in middle seam.
9. Put zipper under seam allowances so that zipper blade cannot be seen and stitch.
10. Turn upper edge of front part, capturing zipper tape, and topstitch.
11. Press seam allowance of hem onto wrong side, turn inside and topstitch.

Congratulations, your jumpsuit is ready! :)