

If the pattern has a double line around it, the seam allowances are included.

Note: By default, seam allowances are NOT included (single line) and will need to be added when laying out and cutting details.

Seam Allowance: 1 cm on all seams; hem guidelines are printed on pattern.

Important! Please print all the paper patterns and lay them out at the width of fabric you plan to use (usually from 90 to 150 cm) to see how much fabric you will need.

Don't forget to take into account pieces to be duplicated or cut on a fold. When sewing the garment, pay attention to notches. They must match up with corresponding pieces.

2039 Dress with Wide Cuffs

Recommendations on fabric: natural/mixed fabrics with elastane suitable for dresses.

You will also need: knit fusible interfacing; dress zipper; 12 buttons; barbed elastic cord.

CUTTING:

The word, "beam" used on some patterns means "straight of grain". Some pieces will be cut on the fold, this is noted on the pattern piece. Mark all notches and other design features such as darts, pleats etc. from the pattern onto your fabric.

Seam allowances: all seams 1 cm. Seam allowance for hem of garment – 2 cm.

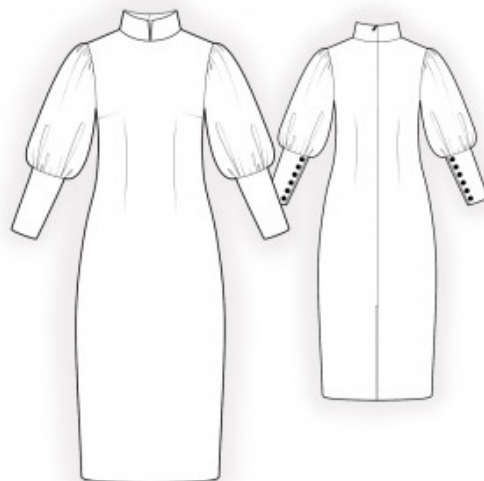
Main fabric:

1. Back – cut 2
2. Front – cut 1 on fold
3. Stand collar – cut 4
4. Sleeve – cut 2
5. Cuff – cut 4

Fusible interfacing:

1. Stand collar – cut 2
2. Cuff – cut 2

INSTRUCTIONS:



Advice: sew knit pieces with special elastic/zig-zag stitches. If you use an overlock, cut seam allowances to 0.6-0.8 cm width. Topstitch hem allowances with double needle to save elasticity.

1. Apply fusible interfacing.
2. Sew the darts on the back and press the bulk toward the center.
3. Sew the front darts and press the bulk toward the top. Sew the waist darts on the front and press the bulk toward the center.
4. Sew the shoulder and side seams, press the seams toward the back, and serge.
5. Pin the stand collar pieces together with right sides facing and sew along the upper and center front edge, starting and stopping exactly at the collar seam line. Clip curves, trim corners, and turn the collar right side out. Press. Sew the outer stand collar to the neckline. Clip into the seam allowance at the front neckline and press the seam allowances at the stand collar.
6. Serge the center back edges separately. Sew the center back seam from the zipper notch down to the slit notch. Press the center seam open. Insert the zipper. Topstitch the seam allowances of the slit 0.2 cm from the edge. Turn under the raw edge of the inner stand collar and stitch in the ditch. Slipstitch the center edges of the inner back stand collar to the zipper tape.
7. Sew a gathering stitch along the upper part of the sleeve cap and gather the fullness. Sew a gathering stitch along the lower edge of the sleeve and gather the fullness. Serge the sleeve edges separately. Sew the sleeve seam from the armhole to the slit mark and press the seam open. Topstitch the slit 0.1 cm from the fold. Sew the sleeves into the armholes, serge, and press.
8. Cut corded elastic into pieces equal to the number of buttons. Make and sew loop buttonholes onto the right side of the outer cuff. Pin the cuffs together with right sides facing and sew the side and lower edges, starting and stopping exactly at the seam line. Turn the cuff right side out and press. Sew the outer cuff to the sleeve. Turn the seam allowance of the inner cuff under and stitch in the ditch along the seam of the outer cuff.
9. Serge the lower edge of the garment, press it to the wrong side, and topstitch.
10. Sew the buttons onto the cuffs according to the notches.

Congratulations, your dress is ready! :)