

If the pattern has a double line around it, the seam allowances are included.

**Note:** By default, seam allowances are NOT included (single line) and will need to be added when laying out and cutting details.

Seam Allowance: 1 cm on all seams; hem guidelines are printed on pattern.

**Important!** Please print all the paper patterns and lay them out at the width of fabric you plan to use (usually from 90 to 150 cm) to see how much fabric you will need.

Don't forget to take into account pieces to be duplicated or cut on a fold. When sewing the garment, pay attention to notches. They must match up with corresponding pieces.

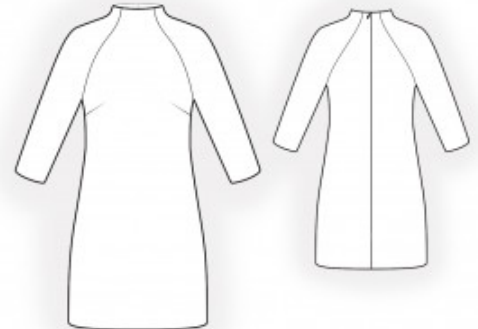
## 2044 Fitted Jersey Dress

Recommendations on fabric: natural/mixed knit fabric of small stretchiness.

You will also need: knit fusible interfacing; 1 dress zipper.

### CUTTING:

The word, “beam” used on some patterns means “straight of grain”. Some pieces will be cut on the fold, this is noted on the pattern piece. Mark all notches and other design features such as darts, pleats etc. from the pattern onto your fabric.



Seam allowances: all seams 1 cm. Seam allowance for hem of garment and hem of sleeve – 3 cm.

### Main fabric:

1. Back – cut 2
2. Front – cut 1
3. Back sleeve – cut 2
4. Front sleeve – cut 2
5. Back neck facing – cut 2

## 6. Front neck facing – cut 1

### Fusible interfacing:

1. Back neck facing – cut 2
2. Front neck facing – cut 1

### INSTRUCTIONS:

Advice: sew knit pieces with special elastic/zig-zag stitches. If you use an overlock, cut seam allowances to 0.6-0.8 cm width. Topstitch hem allowances with double needle to save elasticity.

1. Apply interfacing to the facings.
2. Sew the darts on the front and press the bulk upward.
3. Serge the center back edges separately. Sew the center seam from the zipper mark down to the hem. Press the seam allowances open, pressing the zipper slit at the same time. Insert the zipper.
4. Sew the back sleeves to the back bodice, press the seam allowances toward the sleeve, and serge. Sew the front sleeves to the front bodice, press the seam allowances toward the sleeve, and serge.
5. Sew the upper sleeve seams, press the seams toward the back, and serge. Sew the lower sleeve seams and side seams in one continuous stitch, press the seams toward the back, and serge.
6. Sew the shoulder seams of the facings and press them open. Serge the lower edge of the facings. Pin the facing to the garment with right sides together and sew the neckline. Clip the curves, turn the facing to the inside, straighten, and press. Slipstitch the facing to the zipper tape and to the shoulder seams.
7. Serge the seam allowances along the garment hem and sleeve hems, press to the wrong side, and topstitch.

Congratulations, your dress is ready! :)