

If the pattern has a double line around it, the seam allowances are included.

Note: By default, seam allowances are NOT included (single line) and will need to be added when laying out and cutting details.

Seam Allowance: 1 cm on all seams; hem guidelines are printed on pattern.

Important! Please print all the paper patterns and lay them out at the width of fabric you plan to use (usually from 90 to 150 cm) to see how much fabric you will need.

Don't forget to take into account pieces to be duplicated or cut on a fold. When sewing the garment, pay attention to notches. They must match up with corresponding pieces.

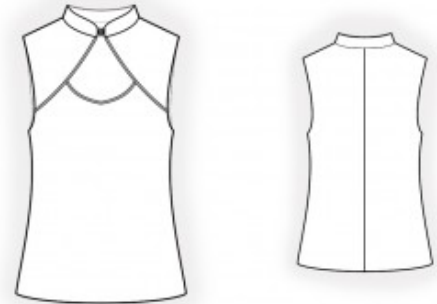
2059 Top with Deep Neckline

Recommendations on fabric: natural/mixed knit fabric of medium stretchiness.

You will also need: closure – buckle; knit bias tape.

CUTTING:

The word, “beam” used on some patterns means “straight of grain”. Some pieces will be cut on the fold, this is noted on the pattern piece. Mark all notches and other design features such as darts, pleats etc. from the pattern onto your fabric.



Seam allowances: seam allowance for hem of garment – 2 cm, front neckline edge and lower edge yokes – 0 cm, other seams – 1 cm.

Main fabric:

1. Front – cut 1 on fold
2. Back – cut 2
3. Front yoke – cut 2
4. Stand collar – cut 2

INSTRUCTIONS:

Advice: sew knit pieces with special elastic/zig-zag stitches. If you use an overlock, cut seam allowances to 0.6-0.8 cm width. Topstitch hem allowances with double needle to save elasticity.

1. Sew front darts (if drafted for the size measurements provided). Press the bulk upward.
2. Sew the center back seam; serge and press toward the left.
3. Finish the front neckline slit with bias tape. Serge the upper edges of the front. Finish the lower edges of the front yokes with bias tape. Pin the yokes onto the upper edge of the front and topstitch into the seam of the bias tape finishing the edge.
4. Sew shoulder and side seams; press seams toward the back and serge.
5. Pin the stand collars together, right sides facing, and sew along the upper edge, inserting the buckle closure. Clip curves, turn right side out, and press. Sew the outer stand collar into the neckline and press at the stand collar. Fold under the seam allowance of the inner side by 1 cm and stitch in the ditch.
6. Cut (or use ready-made) bias tape, 4 cm wide and as long as the armhole length plus 6 cm. Fold the bias tape in half lengthwise, right side out, and press. Pin the bias tape to the armhole edge from the right side and sew. Fold the bias tape to the wrong side, clip into the seam allowances, and topstitch onto the main piece along the seam. Press the seam.
7. Serge the lower edge of the garment; press to the wrong side and topstitch.

Congratulations, your top is ready! :)