

If the pattern has a double line around it, the seam allowances are included.

Note: By default, seam allowances are NOT included (single line) and will need to be added when laying out and cutting details.

Seam Allowance: 1 cm on all seams; hem guidelines are printed on pattern.

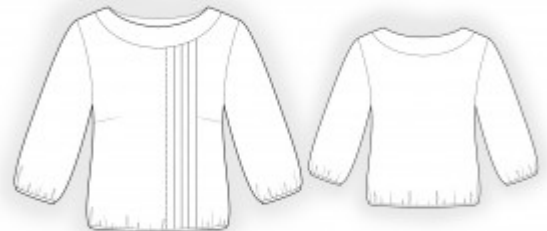
Important! Please print all the paper patterns and lay them out at the width of fabric you plan to use (usually from 90 to 150 cm) to see how much fabric you will need.

Don't forget to take into account pieces to be duplicated or cut on a fold. When sewing the garment, pay attention to notches. They must match up with corresponding pieces.

2062 Blouse with asymmetric sewn pleats

Recommendations on fabric: natural/mixed fabrics suitable for blouses.

You will also need: fusible interfacing; bias tape (approximate length is given on the sleeve pattern block).



CUTTING:

The word, “beam” used on some patterns means “straight of grain”. Some pieces will be cut on the fold, this is noted on the pattern piece. Mark all notches and other design features such as darts, pleats etc. from the pattern onto your fabric.

Seam allowances: Seam allowance for hem of garment and hem of sleeve – 0 cm; other seams – 1 cm.

Main fabric:

1. Back - cut 1 on fold
2. Front - cut 1
3. Sleeve – cut 2
4. Back neck facing — cut 2
5. Front neck facing — cut 2

Fusible interfacing:

1. Back neck facing — cut 1

2. Front neck facing — cut 1

INSTRUCTIONS:

1. Apply fusible interfacing.
2. Sew front darts, press bulk towards top.
3. Make and stitch pleats on front, press bulk to the left.
4. Sew back neckline facing to back, press seam allowances towards placket. Sew front neckline facing to facing, press seam allowances towards placket.
5. Sew side and shoulder seams, press seams towards back and serge.
6. Sew shoulder seams on inner facings, press seam apart. Serge outer edge. Pin facings to garment right sides together and sew the neckline. Clip seam allowances, fold facing onto wrong side and stitch-in-the-ditch along seam of outer facing.
7. Sew sleeve seam, press seams towards back and serge. Sew sleeves into armholes matching notches and adjusting ease, serge and press.
8. Sew a gathering stitch along the hem of garment and hem of sleeve and gather fullness. Finish hem of garment and hem of sleeve with bias tape.

Congratulations, your blouse is ready! :)