

If the pattern has a double line around it, the seam allowances are included.

Note: By default, seam allowances are NOT included (single line) and will need to be added when laying out and cutting details.

Seam Allowance: 1 cm on all seams; hem guidelines are printed on pattern.

Important! Please print all the paper patterns and lay them out at the width of fabric you plan to use (usually from 90 to 150 cm) to see how much fabric you will need.

Don't forget to take into account pieces to be duplicated or cut on a fold. When sewing the garment, pay attention to notches. They must match up with corresponding pieces.

2066 Skirt with Shaped Yoke and 6 Panels

Recommendations on fabric: natural/mixed fabric suitable for dresses.

You will also need: fusible interfacing; 1 dress zipper.

CUTTING:

The word, “beam” used on some patterns means “straight of grain”. Some pieces will be cut on the fold, this is noted on the pattern piece. Mark all notches and other design features such as darts, pleats etc. from the pattern onto your fabric.

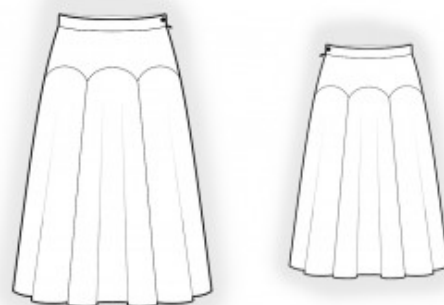
Seam allowances: all seams 1 cm. Seam allowance for hem of garment – 1,5 cm.

Main fabric:

1. Back yoke – cut 1
2. Front yoke – cut 2
3. Skirt gore – cut 6
4. Belt – cut 1

Fusible interfacing:

1. Belt – cut 1



INSTRUCTIONS:

1. Apply fusible interfacing to the belt.
2. Serge the upper edges of the gores. Serge the lower edge of the back yoke. Sew the gores to the back yoke (start and stop stitching exactly at the marked line of the gore seams); press the seams. Sew the gores together, serge, and press.
3. Serge the lower edge of the front yoke. Sew the gores to the front yoke (start and stop stitching exactly at the marked line of the gore seams); press the seams. Sew the gores together, serge, and press.
4. Serge the left side edges separately. Sew the left side seam from the zipper mark down to the hem; press the seam open. Sew in the zipper. Sew the right side edge; serge and press.
5. Fold the belt in half lengthwise, right sides together, and sew the short edges and one end. Clip into the seam allowance near the notch. Turn the belt right side out and press. Sew the outer edge of the belt to the skirt; fold under the seam allowance of the inner side and stitch in the ditch.
6. Serge the lower edge of the skirt; press to the wrong side and topstitch.
7. Make a buttonhole on the belt and sew on the button.

Congratulations, your skirt is ready! :)