

If the pattern has a double line around it, the seam allowances are included.

Note: By default, seam allowances are NOT included (single line) and will need to be added when laying out and cutting details.

Seam Allowance: 1 cm on all seams; hem guidelines are printed on pattern.

Important! Please print all the paper patterns and lay them out at the width of fabric you plan to use (usually from 90 to 150 cm) to see how much fabric you will need.

Don't forget to take into account pieces to be duplicated or cut on a fold. When sewing the garment, pay attention to notches. They must match up with corresponding pieces.

2069 Dress with Decorative Bodice

Recommendations on fabric: natural/mixed knit fabric of small/medium stretchiness.

You will also need: dress zipper.

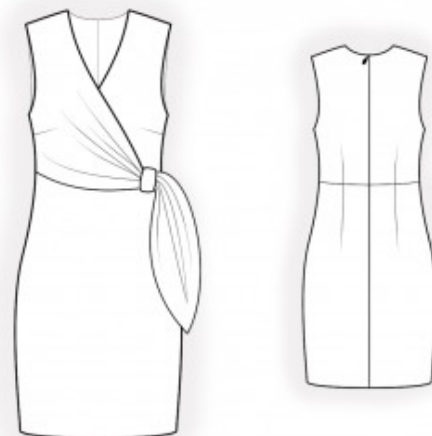
CUTTING:

The word, “beam” used on some patterns means “straight of grain”. Some pieces will be cut on the fold, this is noted on the pattern piece. Mark all notches and other design features such as darts, pleats etc. from the pattern onto your fabric.

Seam allowances: seam allowance for hem of garment – 3 cm, other seams – 1 cm.

Main fabric:

1. Upper back – cut 4
2. Lower back – cut 2
3. Upper right front – cut 2
4. Upper left front – cut 2
5. Lower front – cut 1
6. Strap – cut 1



INSTRUCTIONS:

Advice: sew knit pieces with special elastic/zig-zag stitches. If you use an overlock, cut seam allowances to 0.6-0.8 cm width. Topstitch hem allowances with double needle to save elasticity.

1. Sew darts on the upper back and lower back; press the bulk toward the center.
2. Sew front darts; press the bulk upward.
3. Sew side and shoulder seams of the upper parts; press the seams open. Pin the outer and inner parts together, right sides facing, and sew the armholes in two steps: first sew the front armhole, then the back armhole. Sew the neckline opening and the "tail" up to the notch. Clip into the seam allowance near the notch. Trim the seam allowances along curves and trim the corner. Turn the pieces right side out and press. Treat as one piece from this point on. Serge the center back edges separately.
4. Serge the center seams of the lower back separately. Sew from the notch for the zipper down to the bottom. Sew and serge the side edges of the lower parts.
5. Fold the strap in half lengthwise and sew along the long edge. Press the seam open, placing it at the center of the piece. Turn the strap right side out and press. Fold the strap in half and sew it to the lower front.
6. Sew the upper part of the dress to the lower part, matching the notches. Serge and press the seam downward.
7. Serge the lower edge of the garment; press to the wrong side and topstitch or hem as desired.
8. Thread the "tail" through the strap and arrange the pleats.

Congratulations, your dress is ready! :)