

If the pattern has a double line around it, the seam allowances are included.

**Note:** By default, seam allowances are NOT included (single line) and will need to be added when laying out and cutting details.

Seam Allowance: 1 cm on all seams; hem guidelines are printed on pattern.

**Important!** Please print all the paper patterns and lay them out at the width of fabric you plan to use (usually from 90 to 150 cm) to see how much fabric you will need.

Don't forget to take into account pieces to be duplicated or cut on a fold. When sewing the garment, pay attention to notches. They must match up with corresponding pieces.

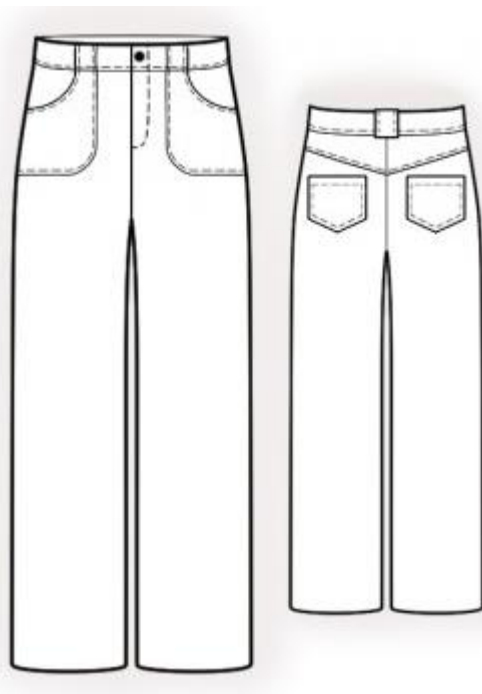
## 2080 Women's straight-leg trousers.

Recommendations on fabric: thin natural/mixed jeans fabric approx. 1.5 m (size 32-40), approx. 2.1 m (size 42-54) with a fabric width of 150 cm.

You will also need: fusible interfacing, 1 zipper; 1 button, bias tape for finishing the pocket opening.

### CUTTING:

The word, "beam" used on some patterns means "straight of grain". Some pieces will be cut on the fold, this is noted on the pattern piece. Mark all notches and other design features such as darts, pleats etc. from the pattern onto your fabric.



Seam allowances: all seams 1 cm; seam allowance for hem 2.5 cm.

### Main fabric:

1. Back half – cut 2
2. Front half – cut 2
3. Back yoke – cut 2
4. Back facing – cut 2
5. Front facing right – cut 2
6. Front facing left – cut 2
7. Button catch – cut 1

8. Back pocket – cut 2
9. Front pocket – cut 2
10. Belt Loop – cut 1

Fusible interfacing:

1. Back facing – cut 1
2. Front facing right – cut 1
3. Front facing left – cut 1
4. Button catch – cut 1

INSTRUCTIONS:

1. Apply fusible interfacing.
2. Sew side seams of the back and front facings. Press Apart side seams facings.
3. Sew back yoke to back half, press towards top and serge.
4. Fold under the upper seam allowance of back pocket onto the wrong side and press, turn under and topstitch. Serge pocket edges, press seam allowances onto wrong side. Pin pocket onto the back half according to markings and topstitch.
5. Sew center edge on back halves, serge and press.
6. Pin bias tape onto the front pocket opening right sides together and sew. Fold bias tape onto the wrong side, clip into seam allowances and topstitch onto main piece along the seam. Press seam. Serge the outer edge of pocket, press onto wrong side. Pin pocket onto the front half and topstitch according to markings.
7. Cut away the one-piece fly from the left front half, leaving seam allowance of 1 cm along the center edge. Serge center front edge and edge of fly.
8. Sew the center edge of front halves, starting stitching at the edge of one-piece fly piece. Press the one-piece fly piece onto the wrong side. Align zipper tape with the center edge of the left half and sew. Sew the free tape of the zipper to the one-piece fly piece of the right half. Sew a decorative stitch along the marked line on the right half of the pants. Fold buttons catch in half lengthwise wrong sides together and sew the shorter lower edge and the lower edge. Sew the raw edges of the button catch. Sew button catch to the seam of zipper tape on the left half. Sew a fixing stitch at the end of the closure from the right side of pants. Sew together the edges of one-piece fly piece and button catch from the wrong side.

9. Sew, press and serge the side seams. Sew, press and serge inside leg seams.
10. Pin facings together, right sides together and sew upper edge. Turn facings onto right side and press. Topstitch the seam onto the inner facing at 0.2 cm from the seam. Serge the lower edge of inner facings.
11. Fold belt loop in half lengthwise right sides together and sew at 0,5-0,7 cm from the edges. Then turn right side out, straighten the seam, place it on the fold, and press. Cut the belt loops, mark the placing of belt loops. Sew belt loops to the lower edge of outer facing.
12. Sew facings to upper edge of pants, matching side seams. Sew facing corners. Trim away corners, turn right side out and press. Topstitch the edge of inner facing into the seam (stitch in the ditch). Topstitch belt loops onto the upper edge of facings.
13. Seam allowance for hem serge, press onto wrong side and topstitch. Make buttonholes on the right facing and sew on buttons on the left one.

Congratulations, your trousers are ready! :)