

If the pattern has a double line around it, the seam allowances are included.

Note: By default, seam allowances are NOT included (single line) and will need to be added when laying out and cutting details.

Seam Allowance: 1 cm on all seams; hem guidelines are printed on pattern.

Important! Please print all the paper patterns and lay them out at the width of fabric you plan to use (usually from 90 to 150 cm) to see how much fabric you will need.

Don't forget to take into account pieces to be duplicated or cut on a fold. When sewing the garment, pay attention to notches. They must match up with corresponding pieces.

2094 Wrap Top with Draping

Recommendations on fabric: natural/mixed fabric suitable for dresses.

You will also need: lining; fusible interfacing, 3 outer buttons; 1 inner button.

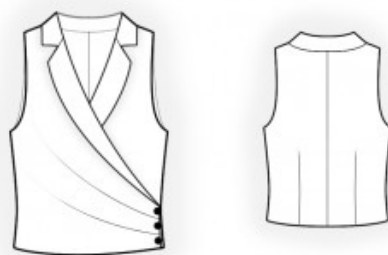
CUTTING:

The word, “beam” used on some patterns means “straight of grain”. Some pieces will be cut on the fold, this is noted on the pattern piece. Mark all notches and other design features such as darts, pleats etc. from the pattern onto your fabric.

Seam allowances: 1 cm for all seams.

Main fabric:

1. Back – cut 2
2. Right front – cut 1
3. Left front – cut 1
4. Lapel – cut 4
5. Collar – cut 2
6. Center front facing – cut 2
7. Back neck facing – cut 1



Lining:

1. Back lining – cut 2
2. Front lining – cut 2

Fusible interfacing:

1. Lapel – cut 2
2. Collar – cut 1
3. Center front facing – cut 2
4. Back neck facing – cut 1

INSTRUCTIONS:

1. Apply fusible interfacing.
2. Sew darts on the back, press bulk towards the center. Sew the center back seam and press it open.
3. Make and baste pleats on the right front (fold bulk towards the bottom). Make a pleat on the left front, 8–10 cm deep, and sew it (fold bulk towards the bottom).
4. Sew side and shoulder seams and press them open.
5. Pin the upper collar to the lower collar and sew the collar fall and corners. Trim corners, turn right side out, straighten, and press the collar. Pin lapels together in pairs and sew the corners and outer edges. Clip near the notch on the lapel, turn the lapel right side out, straighten, and press. Sew the lapel edge: attach the upper collar to the upper lapel and the lower collar to the lower lapel. Press seams open. Slipstitch seam allowances together close to the stitch line. Sew the collar and lapel into the neckline.
6. Cut (or use ready-made) bias tape, 2.5 cm wide and 15 cm long, for loop buttonholes. Fold the tape in half lengthwise, right sides together, and stitch at 0.3 cm from the fold. Trim seam allowances close to the seam, turn the tape right side out, and straighten into a rolled hem. Cut into three parts. Adjust the length of the buttonholes. Topstitch button loops onto the right front (with folds directed away from the edge).
7. Sew side seams of the back neckline facing and buttonstands, press seams open. Sew darts and seams on the lining, leaving an opening for turning in the left side seam. Sew the lining to the inner edges of the center front facings (buttonstands) and to the facing.

8. Pin the center front facing and facing onto the shell, right sides together, and sew the buttonstand, front neckline, back neckline, and lower edge. Clip into seam allowances on curves, trim corners, turn the garment right side out, straighten, and press.
9. Sew the armhole in two steps through the opening in the side seam: first sew the back armhole from the shoulder seam to the side seam, then the front armhole from the shoulder seam to the side seam. Sew the opening closed.
10. On the left front, make a button loop, sew on the inner button, and attach the outer buttons.

Congratulations, your top is ready! :)