

If the pattern has a double line around it, the seam allowances are included.

Note: By default, seam allowances are NOT included (single line) and will need to be added when laying out and cutting details.

Seam Allowance: 1 cm on all seams; hem guidelines are printed on pattern.

Important! Please print all the paper patterns and lay them out at the width of fabric you plan to use (usually from 90 to 150 cm) to see how much fabric you will need.

Don't forget to take into account pieces to be duplicated or cut on a fold. When sewing the garment, pay attention to notches. They must match up with corresponding pieces.

2106 Dress with Wide Waistband and Short Sleeves

Recommendations on fabric:natural/mixed fabric suitable for dresses.

You will also need: dress zipper; fusible interfacing.

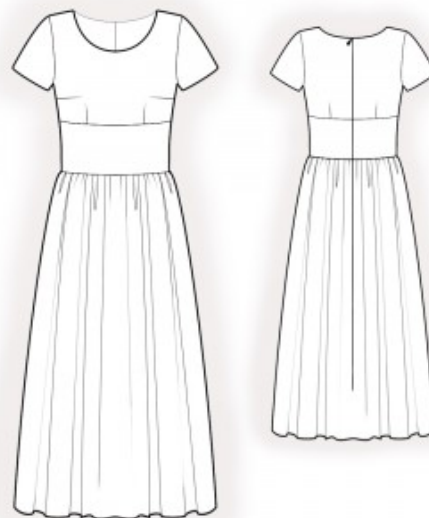
CUTTING:

The word, “beam” used on some patterns means “straight of grain”. Some pieces will be cut on the fold, this is noted on the pattern piece. Mark all notches and other design features such as darts, pleats etc. from the pattern onto your fabric.

Seam allowances: all seams 1 cm. Seam allowance along hem of garment and hem of sleeve – 2 cm.

Main fabric:

1. Upper back – cut 2
2. Back inset – cut 2
3. Lower back - cut 2
4. Lower front – cut 1 on fold
5. Front inset – cut 1
6. Upper front – cut 1
7. Sleeve – cut 2



8. Back neck facing – cut 2
9. Front neck facing – cut 1

Fusible interfacing:

1. Back neck facing – cut 2
2. Front neck facing – cut 1

INSTRUCTIONS:

1. Apply fusible interfacing.
2. Sew darts on the upper backs, pressing bulk towards the center of the pieces. Sew the back inset to the upper back, press seam allowances towards the inset, and serge.
3. Sew a gathering stitch along the upper edge of the lower back and gather fullness. Sew the lower back to the back inset, press towards the top, and serge.
4. Serge center back edges separately. Sew the center back seam from the zipper notch to the bottom, press seams open, and sew in the zipper.
5. Sew darts on the upper fronts. Press the bulk of waist darts towards the center and the bulk of bust darts towards the top. Sew the front inset to the upper front, press seam allowances towards the inset, and serge.
6. Sew a gathering stitch along the upper edge of the lower front and gather fullness. Sew the lower front to the front inset, press towards the top, and serge.
7. Sew side and shoulder seams, press seams towards the back, and serge.
8. Sew shoulder seams of the neck facings, press seams open, and serge the outer edge. Pin the facing to the garment, right sides together, and sew the neckline. Fold the facing to the wrong side, straighten, and press. Slipstitch the facing to the garment along the shoulder seams and center back seam.
9. Sew sleeve seams, press seams towards the back, and serge. Sew sleeves into armholes, matching notches and adjusting ease, then serge and press.
10. Serge the hem of the garment and the lower edge of the sleeve, press to the wrong side, and topstitch.

Congratulations – your dress are finished! :)