

If the pattern has a double line around it, the seam allowances are included.

Note: By default, seam allowances are NOT included (single line) and will need to be added when laying out and cutting details.

Seam Allowance: 1 cm on all seams; hem guidelines are printed on pattern.

Important! Please print all the paper patterns and lay them out at the width of fabric you plan to use (usually from 90 to 150 cm) to see how much fabric you will need. Don't forget to take into account pieces to be duplicated or cut on a fold. When sewing the garment, pay attention to notches. They must match up with corresponding pieces.

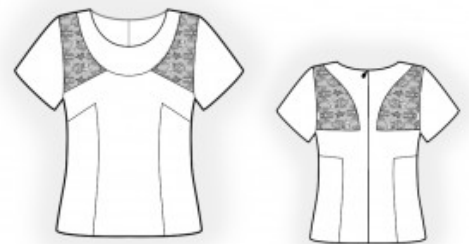
2111 Blouse with Short Sleeves and Lace Insert

Recommendations on fabric: natural/mixed fabrics with elastane suitable for dresses, guipure with elastane.

You will also need: dress zipper.

CUTTING:

The word, "beam" used on some patterns means "straight of grain". Some pieces will be cut on the fold, this is noted on the pattern piece. Mark all notches and other design features such as darts, pleats etc. from the pattern onto your fabric.



Seam allowances: seam allowances: seam allowance for hem of garment and hem of sleeve – 2 cm, other seams 1 cm.

Main fabric:

1. Upper back – cut 2
2. Center back – cut 2
3. Center front – cut 1
4. Front neckline – cut 1
5. Side back – cut 2
6. Side front – cut 2

Guipure:

1. Upper front trimming – cut 1

2. Upper back trimming – cut 2
3. Sleeve – cut 2

INSTRUCTIONS:

Advice: sew knit pieces with special elastic/zig-zag stitches. If you use an overlock, cut seam allowances to 0.6-0.8 cm width. Topstitch hem allowances with double needle to save elasticity.

1. Sew shoulder seams of the front trimming and back trimming, press seams towards the back, and serge.
2. Sew side parts to the front and back, clipping into the seam allowance near the corner. Serge and press the horizontal edge towards the top, and serge and press the vertical edge towards the center.
3. Sew the upper front trimming to the center part, serge, and press towards the bottom.
4. Sew shoulder edges of the upper back and front neckline, pressing seams towards the back. Pin guipure, wrong side down, onto the right side of the upper part. Sew the neckline, clip seam allowances, fold the guipure to the wrong side, and press.
5. Fold under the upper edges of the upper back and the front neckline and press. Topstitch the upper backs onto the guipure inset according to the markings at 0.1–0.2 cm from the edge. Topstitch the front neckline onto the guipure inset and onto the central part according to the markings at 0.1–0.2 cm from the edge.
6. Sew the upper back to the center back.
7. Sew the center back seam from the closure notch down to the hem. Press the center seam open and sew in the zipper.
8. Sew side seams, serge, and press towards the back.
9. Sew sleeve seams, serge, and press towards the back. Sew sleeves into armholes, matching notches, and serge. Fold the sleeve hem inside twice by 1 cm and topstitch.
10. Serge the lower edge of the garment, fold the seam allowance to the wrong side, press, and topstitch.

Congratulations – your blouse are finished! :)