

If the pattern has a double line around it, the seam allowances are included.

**Note:** By default, seam allowances are NOT included (single line) and will need to be added when laying out and cutting details.

Seam Allowance: 1 cm on all seams; hem guidelines are printed on pattern.

**Important!** Please print all the paper patterns and lay them out at the width of fabric you plan to use (usually from 90 to 150 cm) to see how much fabric you will need.

Don't forget to take into account pieces to be duplicated or cut on a fold. When sewing the garment, pay attention to notches. They must match up with corresponding pieces.

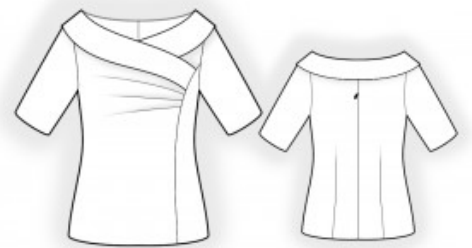
## 2119 Blouse with Open Shoulders and Collar

Recommendations on fabric: natural/mixed fabrics with elastane suitable for dresses.

You will also need: dress zipper, fusible interfacing.

### CUTTING:

The word, "beam" used on some patterns means "straight of grain". Some pieces will be cut on the fold, this is noted on the pattern piece. Mark all notches and other design features such as darts, pleats etc. from the pattern onto your fabric.



Seam allowances: all seams 1 cm; seam allowance for hem of blouse and hem of sleeve – 2 cm.

### Main fabric:

1. Back – cut 2
2. Right front – cut 1
3. Left front – cut 1
4. Side front – cut 1
5. Back collar – cut 2
6. Right collar – cut 2
7. Left collar – cut 2
8. Sleeve – cut 2

### Fusible interfacing:

1. Back collar – cut 1

2. Right collar – cut 1
3. Left collar – cut 1

#### INSTRUCTIONS:

Advice: sew knit pieces with special elastic/zig-zag stitches. If you use an overlock, cut seam allowances to 0.6-0.8 cm width. Topstitch hem allowances with double needle to save elasticity.

1. Apply fusible interfacing.
2. Sew darts on the back and press them towards the center.
3. Serge center back edges separately. Sew the center back seam from the neckline to the first notch and from the second notch to the hem. Press the center seam open and sew in the zipper.
4. Sew shoulder seams of the collars, press seams open. Pin the upper and lower collar right sides together and sew the collar fall. Clip seam allowances, turn the collar right side out, straighten, and press.
5. Make and baste pleats on the right front, folding bulk towards the bottom. Sew shoulder seams, press towards the back, and serge.
6. Sew the lower collar into the neckline, pressing seam allowances towards the collar. Fold the lower edge of the upper collar to the inside and stitch in the ditch along the seam of the lower collar. Fold the left collar onto the front, serge the lower edge of the left front together with the collar. Pin the right front onto the left front and stitch in the ditch along the collar seam.
7. Fold the right collar in half, align the fold with the notch, and baste the collar to the front along the curve. Sew the side front to the right front, serge, and press towards the side.
8. Sew side seams, press towards the back, and serge.
9. Sew sleeve seams, press towards the back of the sleeve, and serge. Sew sleeves into armholes, matching notches and adjusting ease on the sleeve cap. Serge and press.
10. Serge the hem of the blouse and the hem of the sleeves, press to the wrong side, and topstitch or hem as desired.  
Congratulations – your blouse are finished! :)