

If the pattern has a double line around it, the seam allowances are included.

**Note:** By default, seam allowances are NOT included (single line) and will need to be added when laying out and cutting details.

Seam Allowance: 1 cm on all seams; hem guidelines are printed on pattern.

**Important!** Please print all the paper patterns and lay them out at the width of fabric you plan to use (usually from 90 to 150 cm) to see how much fabric you will need.

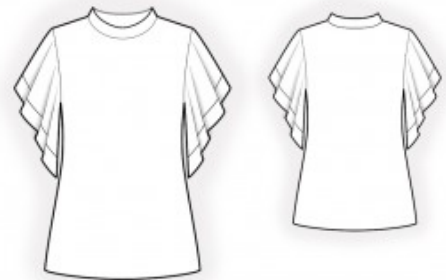
Don't forget to take into account pieces to be duplicated or cut on a fold. When sewing the garment, pay attention to notches. They must match up with corresponding pieces.

## 2120 Blouse with Chiffon Sleeves

Recommendations on fabric: natural/mixed knit fabric of medium stretchiness. Chiffon.

### CUTTING:

The word, "beam" used on some patterns means "straight of grain". Some pieces will be cut on the fold, this is noted on the pattern piece. Mark all notches and other design features such as darts, pleats etc. from the pattern onto your fabric.



Seam allowances: seam allowance for hem of garment – 2 cm, other seams – 1 cm.

### Main fabric:

1. Front – cut 1 on fold
2. Back – cut 1 on fold
3. Stand collar – cut 1
4. Sleeve trimming – cut 2

### Chiffon:

1. Sleeve – cut 2

## INSTRUCTIONS:

Advice: sew knit pieces with special elastic/zig-zag stitches. If you use an overlock, cut seam allowances to 0.6-0.8 cm width. Topstitch hem allowances with double needle to save elasticity.

1. Sew shoulder and side seams on the back and front, press seams towards the back, and serge.
2. Fold the stand collar in half lengthwise and steam it into an arc, pressing the fold. Make sure that the edge to be sewn into the neckline remains the same length.
3. Sew the stand collar into a ring, press seams open. Pin the stand collar in half lengthwise, right side out, and sew it into the neckline (matching the seam of the stand collar with the left shoulder seam), then serge and press.
4. Sew sleeve seams, press towards the back, and serge. Make and slipstitch small pleats along the upper edge of the sleeve near the markings. Sew sleeves into armholes, serge, and press.
5. Sew the sleeve facing into a ring, press seams open. Pin the right side of the sleeve facing to the wrong side of the sleeve and sew. Press the seam, fold the facing to the right side, turn under the raw edge of the facing, and topstitch onto the sleeve.
6. Serge the lower edge of the garment, press to the wrong side, and topstitch.

Congratulations – your blouse are finished! :)