

If the pattern has a double line around it, the seam allowances are included.

Note: By default, seam allowances are NOT included (single line) and will need to be added when laying out and cutting details.

Seam Allowance: 1 cm on all seams; hem guidelines are printed on pattern.

Important! Please print all the paper patterns and lay them out at the width of fabric you plan to use (usually from 90 to 150 cm) to see how much fabric you will need.

Don't forget to take into account pieces to be duplicated or cut on a fold. When sewing the garment, pay attention to notches. They must match up with corresponding pieces.

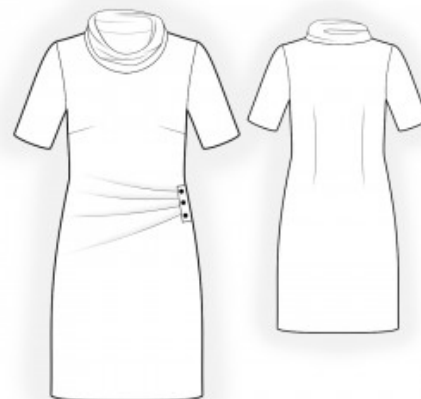
2123 Dress with Draping and Buttons

Recommendations on fabric: well draping natural/mixed knit fabric of medium stretchiness.

You will also need: 3 buttons.

CUTTING:

The word, “beam” used on some patterns means “straight of grain”. Some pieces will be cut on the fold, this is noted on the pattern piece. Mark all notches and other design features such as darts, pleats etc. from the pattern onto your fabric.



Seam allowances: all seams 0.7 cm. Seam allowance for hem of garment and hem of sleeve – 2 cm.

Main fabric:

1. Back – cut 1 on fold
2. Front – cut 1
3. Collar – cut 1
4. Sleeve – cut 2
5. Flap – cut 1
6. Underlay piece – cut 1

INSTRUCTIONS:

Advice: sew knit pieces with special elastic/zig-zag stitches. If you use an overlock, cut seam allowances to 0.6-0.8 cm width. Topstitch hem allowances with double needle to save elasticity.

1. Sew darts on the front and trim seam allowances with a serger. Make and baste pleats according to notches. Pin the flap in half lengthwise, right side out, and press. Sew the flap to the front, clipping into corners on the front, starting and stopping exactly at the marked line of the pocket opening. Press the false pocket.
2. Pin the underlay piece under the flap. Serge along the three inner edges of the underlay piece, front, and flap at the same time.
3. Sew darts on the back, trim bulk with a serger, and press towards the center.
4. Sew shoulder seams, serge, and press towards the back. Sew the collar into a ring, press seams open. Fold the collar in half lengthwise and press. Sew the collar into the neckline and serge.
5. Sew the sleeve into the open armhole.
6. Sew side seams, stitching the sleeve edges at the same time. **Attention:** Make sure the flap fold does not get caught in the side seam. Serge seams and press towards the back.
7. Serge the hem of the garment and the lower edge of the sleeve. Press the seam allowance on the lower edge to the wrong side and topstitch.
8. Sew buttons onto the flap.

Congratulations – your dress are finished! :)