

If the pattern has a double line around it, the seam allowances are included.

**Note:** By default, seam allowances are NOT included (single line) and will need to be added when laying out and cutting details.

Seam Allowance: 1 cm on all seams; hem guidelines are printed on pattern.

**Important!** Please print all the paper patterns and lay them out at the width of fabric you plan to use (usually from 90 to 150 cm) to see how much fabric you will need.

Don't forget to take into account pieces to be duplicated or cut on a fold. When sewing the garment, pay attention to notches. They must match up with corresponding pieces.

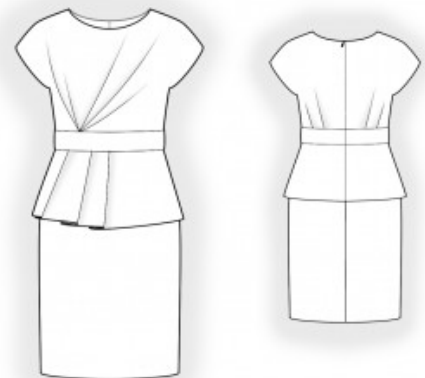
## 2128 Dress with Peplum

Recommendations on fabric: thick natural/mixed fabric suitable for dresses.

You will also need: dress zipper.

### CUTTING:

The word, “beam” used on some patterns means “straight of grain”. Some pieces will be cut on the fold, this is noted on the pattern piece. Mark all notches and other design features such as darts, pleats etc. from the pattern onto your fabric.



Seam allowances: all seams 1 cm; seam allowance for hem of garment and hem of peplum – 1.2 cm.

### Main fabric:

1. Upper back – cut 2
2. Back inset – cut 2
3. Lower back – cut 2
4. Back peplum – cut 2
5. Upper front – cut 1
6. Front inset – cut 1
7. Lower front – cut 1 on fold

## 8. Front peplum – cut 1

### INSTRUCTIONS:

1. Make and baste pleats on the upper backs, folding bulk towards the side edge. Sew the back inset to the upper back, press seam allowances towards the inset, and serge.
2. Sew darts on the lower backs, pressing bulk towards the center.
3. Make and baste pleats on the upper front (two on the right and three on the left), folding bulk towards the side seams. Sew the front inset to the upper front, press seam allowances towards the inset, and serge.
4. Sew shoulder seams, press towards the back, and serge.
5. Cut or use ready-made bias tape, 4 cm wide and the length of the neckline plus 4 cm. Fold the bias tape in half lengthwise, right side out, and press. Pin the bias tape to the neckline from the right side and sew. Fold the bias tape to the wrong side and topstitch onto the main piece along the seam.
6. Cut or use ready-made bias tape, 4 cm wide and the length of the armhole. Fold the bias tape in half lengthwise, right side out, and press. Pin the bias tape to the armhole edge from the right side and sew. Fold the bias tape to the wrong side and topstitch onto the main piece along the seam.
7. Make and baste pleats on the front peplum, folding bulk towards the side edge. Sew side seams of the peplum, press seams open, and serge. Serge the lower edge of the peplum, press to the wrong side, and topstitch.
8. Sew side seams on the lower part and upper part, press towards the back, and serge.
9. Pin the peplum to the lower part, wrong side of the peplum to the right side of the shell, and baste together along the edges. Sew the upper part to the lower part, press towards the top, and serge.
10. Serge center back edges separately, sew from the zipper notch to the bottom, press seams open, and sew in the zipper.
11. Serge the lower edge of the garment, press to the wrong side, and topstitch.  
Congratulations – your dress are finished! :)