

If the pattern has a double line around it, the seam allowances are included.

Note: By default, seam allowances are NOT included (single line) and will need to be added when laying out and cutting details.

Seam Allowance: 1 cm on all seams; hem guidelines are printed on pattern.

Important! Please print all the paper patterns and lay them out at the width of fabric you plan to use (usually from 90 to 150 cm) to see how much fabric you will need.

Don't forget to take into account pieces to be duplicated or cut on a fold. When sewing the garment, pay attention to notches. They must match up with corresponding pieces.

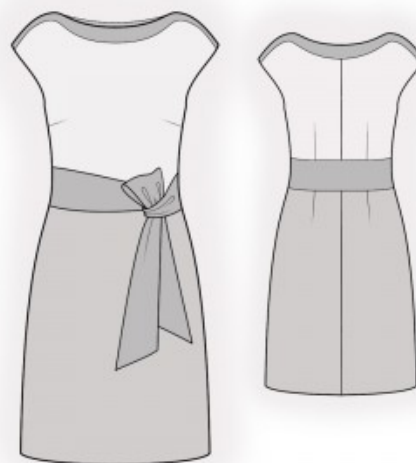
2135 Three-Tone Midi Dress with Belt

Recommendations on fabric: natural/mixed knit fabric of medium stretchiness.

You will also need: knit fusible interfacing.

CUTTING:

The word, "beam" used on some patterns means "straight of grain". Some pieces will be cut on the fold, this is noted on the pattern piece. Mark all notches and other design features such as darts, pleats etc. from the pattern onto your fabric.



Seam allowances: all seams 1 cm. Seam allowance along hem of dress – 3 cm.

Main fabric:

1. Lower front – cut 1
2. Lower back – cut 2

Main fabric 1:

1. Back neck facing – cut 2
2. Front neck facing – cut 2
3. Front belt – cut 4
4. Back belt – cut 1

Main fabric 2:

1. Upper back – cut 2

2. Upper front – cut 1 on fold

Fusible interfacing:

1. Back neck facing – cut 1
2. Front neck facing – cut 1

INSTRUCTIONS:

Advice: sew knit pieces with special elastic/zig-zag stitches. If you use an overlock, cut seam allowances to 0.6-0.8 cm width. Topstitch hem allowances with double needle to save elasticity.

1. Apply fusible interfacing.
2. Sew darts on the back, pressing bulk towards the center. Sew the center back seam on the upper backs and lower backs, serge, and press towards the left. Sew the back belt to the upper back and lower back, serge, and press towards the belt.
3. Sew front darts, pressing bulk towards the top.
4. Sew the upper front to the lower front, serge, and press towards the top.
5. Pin front neckline facings together, right sides facing, and sew the neckline and shoulder edges. Turn the facing right side out and press. Finish the back facing in the same way. Sew the front facing to the back facing, folding them apart onto two sides. Sew the front facing to the upper front, serge, and press towards the front. Sew the back facing to the back, serge, and press towards the back.
6. Cut or use ready-made bias tape, 4 cm wide and the length of the armhole plus 6 cm. Fold the bias tape in half lengthwise, right side out, and press. Pin the bias tape to the armhole edge from the right side, leaving loose ends, and sew. Fold the bias tape to the wrong side, clip seam allowances, and topstitch onto the main piece along the seam. Press the seam.
7. Pin front belts together in pairs and sew around the long edges and the slanted edge. Trim seam allowances, turn right side out, and press.
8. Sew side seams, inserting the front belts according to notches. Press seams towards the back and serge.
9. Serge the lower edge of the dress, press to the wrong side, and topstitch.

Congratulations – your dress are finished! :)