

If the pattern has a double line around it, the seam allowances are included.

Note: By default, seam allowances are NOT included (single line) and will need to be added when laying out and cutting details.

Seam Allowance: 1 cm on all seams; hem guidelines are printed on pattern.

Important! Please print all the paper patterns and lay them out at the width of fabric you plan to use (usually from 90 to 150 cm) to see how much fabric you will need.

Don't forget to take into account pieces to be duplicated or cut on a fold. When sewing the garment, pay attention to notches. They must match up with corresponding pieces.

2147 Dress with Decorative Darts and Kimono Sleeves

Recommendations on fabric: natural/mixed fabric suitable for dresses.

You will also need: dress zipper; fusible interfacing.

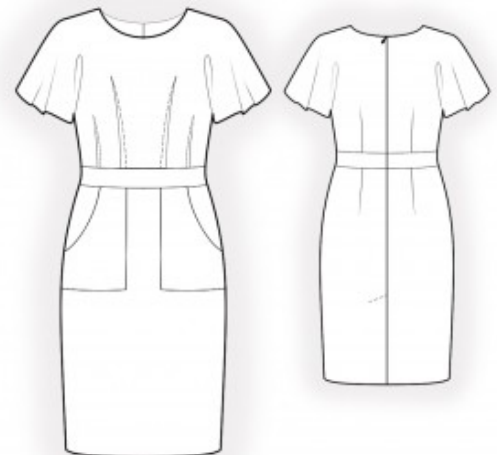
CUTTING:

The word, “beam” used on some patterns means “straight of grain”. Some pieces will be cut on the fold, this is noted on the pattern piece. Mark all notches and other design features such as darts, pleats etc. from the pattern onto your fabric.

Seam allowances: all seams 1 cm. Seam allowance along hem of garment – 2.5 cm, seam allowance on lower edge of sleeve – 1.2 cm, seam allowance along vent – 6 cm.

Main fabric:

1. Upper back – cut 2
2. Back belt – cut 1
3. Lower back – cut 2
4. Lower front – cut 1 on fold
5. Front belt – cut 1



6. Upper front – cut 1 on fold
7. Back neck facing – cut 2
8. Front neck facing – cut 1
9. Pocket – cut 2

Fusible interfacing:

1. Back neck facing – cut 2
2. Front neck facing – cut 1

INSTRUCTIONS:

1. Apply fusible interfacing.
2. Sew darts on backs and lower front, pressing bulk towards the center of the pieces. Sew darts on upper front, folding the piece wrong sides together, and press bulk towards side edges.
3. Sew back belt to upper back, press seam allowances towards the belt and serge. Sew lower back to back belt, press seam allowances towards the belt and serge.
4. Cut away 5 cm along the vertical edge of the vent on the lower left back. Apply fusible interfacing to the vent area on both lower backs from the wrong side. Mark the center seam line (vent fold-line) from the right side. Press the left part along the vent fold; on the right side, press only the seam allowance of the right side of the vent (6 cm) to the wrong side. Align pieces along the center seam and baste together along the upper edge of the vent. Serge center back edges separately. Serge seam allowances of the vent. Sew center back seam from zipper marker down to the vent corner. Clip into the seam allowance of the vent in the corner on the right part. Press center seam open, press seam allowances of the vent, and sew them together by machine. Sew in the zipper.
5. Cut (or take ready) bias tape, 4 cm wide and the length equal to the pocket opening + 2 cm. Fold bias tape in half lengthwise, right side out, and press. Pin bias tape onto the pocket opening from the right side, leaving loose ends, and sew. Fold bias tape onto the wrong side, clip into seam allowances, and topstitch onto the main piece along the seam. Press pocket.
6. Serge the outer edges of the pocket that form a right angle, press seam allowances to the wrong side. Pin pocket onto the front half according to markings and topstitch. Slipstitch the seam allowances of the pocket to the upper edge and the side edge.

7. Sew front belt to upper front, press seam allowances towards the belt and serge. Sew lower front to front belt, press seam allowances towards the belt and serge.
8. Sew shoulder seams, press seams towards the back and serge.
9. Serge lower edge of sleeve, press to the wrong side and topstitch.
10. Sew side seams, press seams towards the back and serge.
11. Sew shoulder seams of neck facings, press seam open. Serge outer edge. Pin facings to garment, right sides together, and sew the neckline. Clip into curves, turn facings right side out onto the wrong side, and press. Topstitch seam allowances onto facings at 0.1–0.2 cm. Slipstitch facing to shoulder seams and to zipper tape.
12. Serge lower edge of garment, press to the wrong side and topstitch.

Congratulations – your dress are finished! :)