

If the pattern has a double line around it, the seam allowances are included.

**Note:** By default, seam allowances are NOT included (single line) and will need to be added when laying out and cutting details.

Seam Allowance: 1 cm on all seams; hem guidelines are printed on pattern.

**Important!** Please print all the paper patterns and lay them out at the width of fabric you plan to use (usually from 90 to 150 cm) to see how much fabric you will need.

Don't forget to take into account pieces to be duplicated or cut on a fold. When sewing the garment, pay attention to notches. They must match up with corresponding pieces.

## 2149 Simple blouse

Recommendations on fabric: Natural/mixed fabrics suitable for blouses.

You will also need: dress zipper.

### CUTTING:

The word, "beam" used on some patterns means "straight of grain". Some pieces will be cut on the fold, this is noted on the pattern piece. Mark all notches and other design features such as darts, pleats etc. from the pattern onto your fabric.

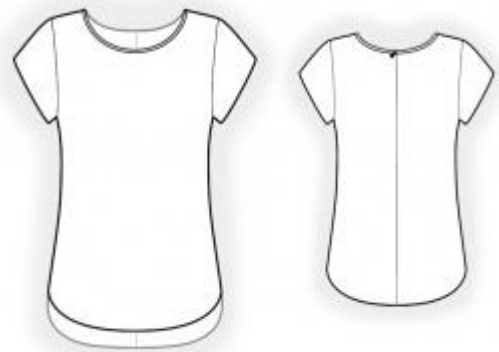
Seam allowances: seam allowance for hem of garment – 1.5 cm, along hem of sleeve – 1.2 cm, other seams 1 cm.

### Main fabric:

1. Back – cut 2
2. Front – cut 1 on fold
3. Sleeve – cut 2

### INSTRUCTIONS:

1. Sew shoulder seams. Press seams towards back and serge.
2. Cut (or take ready) bias tape, its width should equal 4 cm and length should equal the length of neckline + 4 cm. Fold bias tape in half lengthwise right side out and press. Pin



bias tape to neckline from the wrong side, leaving loose ends, and sew. Fold bias tape onto right side, clip into seam allowances and topstitch onto main piece along the seam. Press seam. You may also finish neckline with bias tape (the length of the bias tape is mentioned on the pattern block for Back). In this case, trim away the whole seam allowance of the neckline.

3. Serge separately center back edges. Sew center back seam from closure notch down to hem. Press apart center seam. Sew in zipper.

4. Serge the seam allowances of the hem on Front and Back, fold inside onto wrong side and topstitch.

5. Sew side seams. Serge seams and press towards back.

6. Hem of sleeve serge, turn inside and topstitch. Sew sleeve seam. Serge and press towards back. Sew sleeve into armhole, matching notches. Serge.

Congratulations, your blouse is ready! :)