

If the pattern has a double line around it, the seam allowances are included.

**Note:** By default, seam allowances are NOT included (single line) and will need to be added when laying out and cutting details.

Seam Allowance: 1 cm on all seams; hem guidelines are printed on pattern.

**Important!** Please print all the paper patterns and lay them out at the width of fabric you plan to use (usually from 90 to 150 cm) to see how much fabric you will need.

Don't forget to take into account pieces to be duplicated or cut on a fold. When sewing the garment, pay attention to notches. They must match up with corresponding pieces.

## 2185 Dress with Shaped Neckline

Recommendations on fabric: natural/mixed fabric suitable for dresses.

You will also need: decorative piping (approximate length is given on the front pattern piece) fusible interfacing; dress zipper.

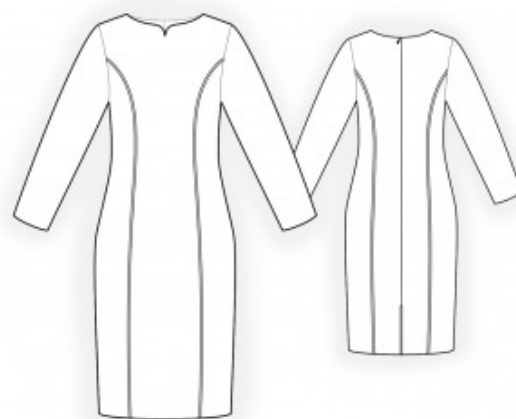
### CUTTING:

The word, "beam" used on some patterns means "straight of grain". Some pieces will be cut on the fold, this is noted on the pattern piece. Mark all notches and other design features such as darts, pleats etc. from the pattern onto your fabric.

Seam allowances: seam allowance along hem of garment and hem of sleeve – 2 cm. Other seams – 1 cm.

### Main fabric:

1. Center back – cut 2
2. Side back – cut 2
3. Center front – cut 1 on fold
4. Side front – cut 2
5. Sleeve – cut 2



6. Front neck facing – cut 1
7. Back neck facing – cut 2

Fusible interfacing:

1. Front neck facing – cut 1
2. Back neck facing – cut 2

INSTRUCTIONS:

1. Apply fusible interfacing.
2. Sew side backs to center back, inserting decorative piping into the seam. Press towards the center and serge. Serge the center back edges separately, then sew them from the zipper mark to the slit mark. Press seam open. Insert the zipper. Sew a fastening stitch along the slit, 0.5 cm from the edge.
3. Serge the outer edge of the back facing. Pin the back facing to the back, right sides together, and sew the neckline. Start and stop stitching exactly at the marked seam line. Clip seam allowances. Fold the facing to the wrong side and press.
4. Sew side fronts to the front, inserting decorative piping into the seam. Press towards the center and serge.
5. Serge the outer edge of the front facing. Pin the front facing to the front, right sides together, and sew the neckline. Clip seam allowances and trim the corner. Fold the facing to the wrong side and press.
6. Sew shoulder seams, inserting the front between the back and the back facing. Serge seams and press towards the back.
7. Sew side seams, press towards the back, and serge.
8. Sew the sleeve seam, serge, and press towards the back. Insert the sleeve into the armhole according to notches, serge, and press.
9. Serge the hem allowance of the garment, press to the wrong side, and topstitch.

Congratulations – your dress are finished! :)