

If the pattern has a double line around it, the seam allowances are included.

**Note:** By default, seam allowances are NOT included (single line) and will need to be added when laying out and cutting details.

Seam Allowance: 1 cm on all seams; hem guidelines are printed on pattern.

**Important!** Please print all the paper patterns and lay them out at the width of fabric you plan to use (usually from 90 to 150 cm) to see how much fabric you will need.

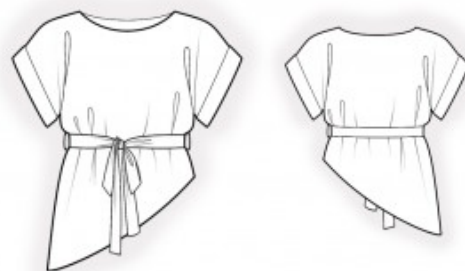
Don't forget to take into account pieces to be duplicated or cut on a fold. When sewing the garment, pay attention to notches. They must match up with corresponding pieces.

## 2187 Blouson with Diagonal Hem

Recommendations on fabric: natural/mixed suiting fabrics, thick knit fabric of small stretchiness.

### CUTTING:

The word, “beam” used on some patterns means “straight of grain”. Some pieces will be cut on the fold, this is noted on the pattern piece. Mark all notches and other design features such as darts, pleats etc. from the pattern onto your fabric.



Seam allowances: seam allowance for hem of garment – 2 cm, other seams – 1 cm.

### Main fabric:

1. Back – cut 1
2. Front – cut 1
3. Cuff – cut 2
4. Belt Loop – cut 1
5. Belt – cut 1

### INSTRUCTIONS:

1. Sew the right shoulder seam, press seam allowance towards the back, and serge.

2. Cut (or prepare) bias tape 4 cm wide and as long as the neckline plus 4 cm. Fold the bias tape in half lengthwise, right side out, and press. Pin the bias tape to the neckline from the right side, leaving loose ends, and stitch. Fold the bias tape to the wrong side, clip seam allowances, and topstitch onto the main piece along the seam. Press the seam.
3. Sew and serge the left shoulder seam. Press seam allowance towards the back.
4. Sew the left side seam, processing the sleeve seam at the same time. Press seams towards the back and serge.
5. Serge the right side edges separately. Sew the side seam, continuing with the sleeve seam up to the slit notch. Press seam open. Topstitch along the slit, 0.5 cm from the edge.
6. Sew the cuff into a ring and press seams open. Fold the cuff in half lengthwise and press. Pin the cuff to the wrong side of the blouse and stitch. Serge the seam. Fold the cuff to the right side. Slipstitch the cuff to the shoulder seam.
7. Serge one long edge of the belt loop. Fold the belt loop into three layers total and topstitch along both long sides. Cut the belt loop into two parts. Topstitch the belt loops to the waist according to the markings.
8. Fold the belt in half lengthwise, right sides together, and stitch, leaving an opening unsewn along the lower edge for turning. Turn the belt right side out, straighten, and press.
9. Serge the lower edge of the garment, press to the wrong side, and topstitch.

Congratulations – your blouson are finished! :)