

If the pattern has a double line around it, the seam allowances are included.

Note: By default, seam allowances are NOT included (single line) and will need to be added when laying out and cutting details.

Seam Allowance: 1 cm on all seams; hem guidelines are printed on pattern.

Important! Please print all the paper patterns and lay them out at the width of fabric you plan to use (usually from 90 to 150 cm) to see how much fabric you will need.

Don't forget to take into account pieces to be duplicated or cut on a fold. When sewing the garment, pay attention to notches. They must match up with corresponding pieces.

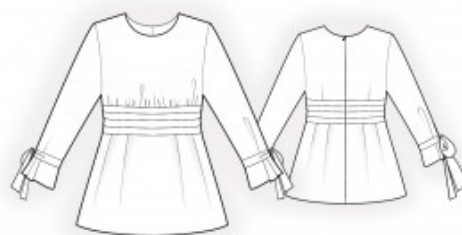
2188 Blouse with Underbust Band

Recommendations on fabric: natural/mixed fabric suitable for dresses.

You will also need: fusible interfacing; dress zipper.

CUTTING:

The word, "beam" used on some patterns means "straight of grain". Some pieces will be cut on the fold, this is noted on the pattern piece. Mark all notches and other design features such as darts, pleats etc. from the pattern onto your fabric.



Seam allowances: 1 cm for all seams. Seam allowance along hem of garment and hem of sleeve – 2 cm.

Main fabric:

1. Upper back – cut 2
2. Back inset – cut 2
3. Lower back – cut 2
4. Lower front – cut 1 on fold
5. Front inset – cut 1
6. Upper front – cut 1 on fold
7. Sleeve – cut 2
8. Tie – cut 4
9. Back neck facing – cut 2

10. Front neck facing – cut 1

INSTRUCTIONS:

1. Apply fusible interfacing.
2. Sew darts on the upper back, pressing bulk towards the center. Make the pleats on the back inset according to markings and topstitch them (the bulk is on the right side, folded downward). Sew the back inset to the upper back, press seam allowances towards the inset, and serge.
3. Make and baste pleats along the upper edge of the lower back (fold bulk towards the side edge). Sew the lower back to the back inset, press upwards, and serge.
4. Serge the center back edges separately. Sew the center back seam from the zipper notch to the hem, press seam open, and insert the zipper.
5. Sew a gathering stitch along the lower edge of the upper front and gather fullness. Sew the front inset to the upper front, press seam allowances towards the inset, and serge.
6. Make and baste pleats along the upper edge of the lower front (fold bulk towards the side edge). Sew the lower front to the front inset, press upwards, and serge.
7. Sew side and shoulder seams, press towards the back, and serge.
8. Sew shoulder seams of the neck facings, press seams open, and serge the outer edge. Pin the facing to the garment, right sides together, and sew the neckline. Clip curves, turn the facing to the wrong side, straighten, and press. Slipstitch the facing to the zipper tape and to seam allowances along the shoulder seams.
9. Fold the tie in half lengthwise, right sides together, and sew along the long edge and one short edge. Turn the tie right side out, straighten, and press.
10. Sew the sleeve seam, inserting the ties. Press seams towards the back and serge.
11. Insert sleeves into armholes, matching notches. Serge and press.
12. Serge the hem of the garment and the lower edge of the sleeves. Press to the wrong side twice at 1 cm and topstitch.
Congratulations – your blouse are finished! :)