

If the pattern has a double line around it, the seam allowances are included.

Note: By default, seam allowances are NOT included (single line) and will need to be added when laying out and cutting details.

Seam Allowance: 1 cm on all seams; hem guidelines are printed on pattern.

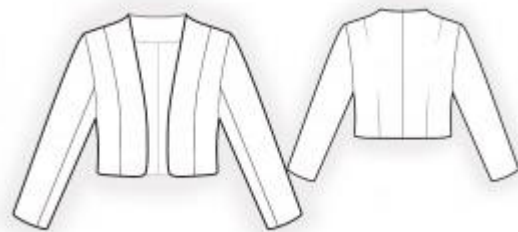
Important! Please print all the paper patterns and lay them out at the width of fabric you plan to use (usually from 90 to 150 cm) to see how much fabric you will need.

Don't forget to take into account pieces to be duplicated or cut on a fold. When sewing the garment, pay attention to notches. They must match up with corresponding pieces.

2202 Bolero, short jacket

Recommendations on fabric: natural/mixed suiting fabrics.

You will also need: fusible interfacing; lining; shoulder pads.



CUTTING:

The word, “beam” used on some patterns means “straight of grain”. Some pieces will be cut on the fold, this is noted on the pattern piece. Mark all notches and other design features such as darts, pleats etc. from the pattern onto your fabric.

Seam allowances: all seams 1 cm. Seam allowance for hem of garment and hem of sleeve - 3 cm.

Main fabric:

1. Back – cut 2
2. Center front – cut 2
3. Side front – cut 2
4. Center front facing – cut 2
5. Back neck facing – cut 1
6. Upper sleeve – cut 2
7. Lower sleeve – cut 2

Lining is cut using pattern blocks for main fabric, except for the width of back neckline facing and buttonstands.

Lining:

1. Back – cut 2
2. Center front – cut 2
3. Side front – cut 2
4. Upper sleeve – cut 2
5. Lower sleeve – cut 2

Fusible interfacing:

1. Center front – cut 2
2. Center front facing – cut 2
3. Back neck facing – cut 1

INSTRUCTIONS:

1. Apply fusible interfacing to corresponding pieces, and also to seam allowances along hem of garment and hem of sleeves. Stabilize edges of armholes.
2. Sew shoulder and waist darts on backs, press bulk towards center. Sew center back seam, press seam apart.
3. Sew side fronts to front, press towards center.
4. Sew shoulder and side seams, press seam apart.
5. Sew elbow seam on sleeve, press seam apart. Press hem of sleeve. Sew and press apart front sleeve seam.
6. Sew sleeves into armholes matching notches, adjusting ease along upper side of sleeve cap. Sew shoulder pads.
7. Sew side seams of back neckline facing and buttonstands, press seam apart. Sew together pieces of lining in the same way as you have sewn pieces from main fabric, leaving an opening in left elbow seam of sleeve. Sew lining to facing and buttonstands, press seam allowances at center front facing.
8. Pin together jacket and lining right sides together, pin together, matching outer edges. Sew center front edge, neckline and lower edge, clip into curves, trim away corners. Turn jacket right side out through the opening. Sew lining to hem of sleeve. Sew the opening closed.

Congratulations, your bolero is ready! :)