

If the pattern has a double line around it, the seam allowances are included.

Note: By default, seam allowances are NOT included (single line) and will need to be added when laying out and cutting details.

Seam Allowance: 1 cm on all seams; hem guidelines are printed on pattern.

Important! Please print all the paper patterns and lay them out at the width of fabric you plan to use (usually from 90 to 150 cm) to see how much fabric you will need.

Don't forget to take into account pieces to be duplicated or cut on a fold. When sewing the garment, pay attention to notches. They must match up with corresponding pieces.

2209 Dress with Pockets in Curved Seams

Recommendations on fabric: natural/mixed fabric suitable for dresses.

You will also need: fusible interfacing; dress zipper.

CUTTING:

The word, "beam" used on some patterns means "straight of grain". Some pieces will be cut on the fold, this is noted on the pattern piece. Mark all notches and other design features such as darts, pleats etc. from the pattern onto your fabric.

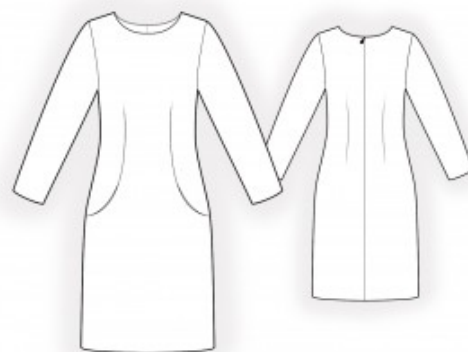
Seam allowances: seam allowance along hem of garment and hem of sleeve – 2 cm. Other seams – 1 cm.

Main fabric:

1. Back – cut 2
2. Front – cut 1 on fold
3. Front neck facing – cut 1
4. Back neck facing – cut 2
5. Pocket bag – cut 4

Fusible interfacing:

1. Front neck facing – cut 1



2. Back neck facing – cut 2

INSTRUCTIONS:

1. Apply fusible interfacing. Also apply fusible interfacing to the seam allowance of the lower pocket bag on the front.
2. Sew darts on the back, pressing bulk towards the center. Serge the center back edges separately, then sew from the zipper notch to the hem. Press seam open and insert the zipper.
3. Clip into seam allowances near the pocket notch. Sew pocket bags to the front and serge. Sew the side front to the front, stitching the pocket bag at the same time, and serge.
4. Sew shoulder and side seams, serge, and press towards the back.
5. Sew the shoulder seams of the neck facings, press seams open, and serge the outer edge. Pin the facing to the dress, right sides together, and sew the neckline. Clip seam allowances, turn the facing to the wrong side, and press. Slipstitch the facing to the zipper tape.
6. Sew the sleeve seam, serge, and press towards the back. Insert the sleeve into the armhole, matching notches, serge, and press.
7. Serge the hem of the garment and the sleeve hems, press to the wrong side, and topstitch.

Congratulations – your dress are finished! :)