

If the pattern has a double line around it, the seam allowances are included.

Note: By default, seam allowances are NOT included (single line) and will need to be added when laying out and cutting details.

Seam Allowance: 1 cm on all seams; hem guidelines are printed on pattern.

Important! Please print all the paper patterns and lay them out at the width of fabric you plan to use (usually from 90 to 150 cm) to see how much fabric you will need.

Don't forget to take into account pieces to be duplicated or cut on a fold. When sewing the garment, pay attention to notches. They must match up with corresponding pieces.

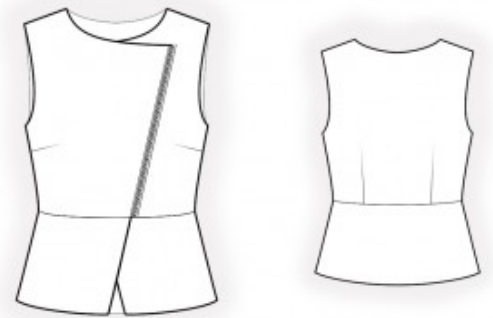
2247 Top with Zipper and Peplum

Recommendations on fabric: thick natural/mixed fabrics suitable for blouses.

You will also need: zipper; fusible interfacing.

CUTTING:

The word, “beam” used on some patterns means “straight of grain”. Some pieces will be cut on the fold, this is noted on the pattern piece. Mark all notches and other design features such as darts, pleats etc. from the pattern onto your fabric.



Seam allowances: all seams 1 cm. Seam allowance along hem – 1.5 cm. The outer seam allowance of the front peplum – 2 cm.

Main fabric:

1. Upper back – cut 1
2. Back peplum – cut 1
3. Upper right front – cut 1
4. Upper left front – cut 1
5. Front peplum – cut 2
6. Back facing - cut 1
7. Center front facing of left front – cut 1
8. Center front facing of right front – cut 1

Fusible interfacing:

1. Back facing – cut 1
2. Center front facing of left front – cut 1
3. Center front facing of right front – cut 1

INSTRUCTIONS:

1. Apply fusible interfacing. Also apply fusible interfacing to the area under the zipper on the left front from the wrong side.
2. Sew darts on the back and front, pressing waist darts towards the center and bust darts upwards.
3. Sew shoulder seams, press towards the back, and serge.
4. Fold the zipper tape on the left side of the zipper in half lengthwise and press. Place it onto the left front according to the markings and topstitch from the right side.
5. Sew side edges of the upper parts, press towards the back, and serge.
6. Sew side and shoulder edges of the neckline facing and center front facing, press seams open, and serge the outer edge. Pin the center front facings to the blouse, right sides together, and sew the neckline and center front facings, inserting the right side of the zipper tape. Clip curves, turn the facing and center front facing to the wrong side, and press. Slipstitch the facing to the shoulder seams.
7. Sew side seams of the lower parts, press towards the back, and serge. Serge, turn inside, and topstitch lower edges. Fold under the outer edges of the peplum twice by 1 cm and topstitch. Sew the upper part to the lower part, serge, and press downwards.
8. Cut or prepare bias tape, 4 cm wide and as long as the armhole plus 5 cm. Fold the bias tape in half lengthwise, right side out, and press. Pin the bias tape to the armhole edge from the right side and stitch. Clip seam allowances, fold the bias tape to the wrong side, and topstitch along the seam. Press.

Congratulations – your top are finished! :)