

If the pattern has a double line around it, the seam allowances are included.

Note: By default, seam allowances are NOT included (single line) and will need to be added when laying out and cutting details.

Seam Allowance: 1 cm on all seams; hem guidelines are printed on pattern.

Important! Please print all the paper patterns and lay them out at the width of fabric you plan to use (usually from 90 to 150 cm) to see how much fabric you will need.

Don't forget to take into account pieces to be duplicated or cut on a fold. When sewing the garment, pay attention to notches. They must match up with corresponding pieces.

2259 Skirt with Yoke and Zipper Pockets

Recommendations on fabric: natural/mixed suiting fabrics in contrasting or similar color.

You will also need: fusible interfacing; lining; 1 dress zipper; two small zippers.

CUTTING:

The word, "beam" used on some patterns means "straight of grain". Some pieces will be cut on the fold, this is noted on the pattern piece. Mark all notches and other design features such as darts, pleats etc. from the pattern onto your fabric.

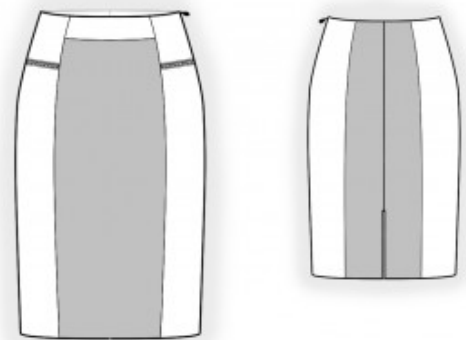
Seam allowances: all seams 1 cm. Seam allowance along hem – 3 cm.

Main fabric:

1. Back side skirt – cut 2
2. Upper front side – cut 2
3. Lower front side – cut 2
4. Outer front facing – cut 1
5. Inner back facing – cut 1
6. Inner front facing – cut 1

Main fabric 1:

1. Back center skirt – cut 2



2. Center front skirt – cut 1 on fold

Lining:

1. Small pocket bag – cut 2

2. Large pocket bag – cut 2

Fusible interfacing:

1. Inner back facing – cut 1

2. Inner front facing – cut 1

INSTRUCTIONS:

1. Apply fusible interfacing to inner facings.
2. Serge center back edges separately. Sew the center back seam of the skirt from the top to the notch marking the slit. Press the seam open. Sew a fastening stitch along the slit 0.2 cm from the edge. Sew center back skirt to side back skirt, serge seams, and press towards the center.
3. Pin smaller pocket lining to the lower front side, right sides together, and sew, inserting the lower part of the zippers. Turn lining to the wrong side and press. Pin larger pocket lining to the upper front side, right sides together, and sew, inserting the upper part of the zipper. Fold side upwards and press. Close the zipper and sew the lower edges of the lining. Serge. Slipstitch side edges of the pocket lining to the side and princess seams of the front.
4. Sew the outer front facing to the center front. Serge and press upwards.
5. Sew side fronts to front, serge, and press towards the center.
6. Serge left side edges separately. Sew the left side seam from the zipper notch to the hem, press seam open, pressing the slit for the zipper at the same time. Insert zipper. Sew the right side seam, press seam allowances towards the back, and serge.
7. Sew the right side seam of the facings, press seam open. Serge the lower edge. Pin facing to skirt, right sides together, and sew the upper edge. Topstitch seam allowances onto the facing 0.2 cm from the seam. Fold facings to the wrong side and press. Slipstitch seam allowances to the zipper tape. Slipstitch facing to princess seams.
8. Serge the hem of the skirt, press to the wrong side, and topstitch or hem as desired. Congratulations – your skirt are finished! :)