

If the pattern has a double line around it, the seam allowances are included.

Note: By default, seam allowances are NOT included (single line) and will need to be added when laying out and cutting details.

Seam Allowance: 1 cm on all seams; hem guidelines are printed on pattern.

Important! Please print all the paper patterns and lay them out at the width of fabric you plan to use (usually from 90 to 150 cm) to see how much fabric you will need.

Don't forget to take into account pieces to be duplicated or cut on a fold. When sewing the garment, pay attention to notches. They must match up with corresponding pieces.

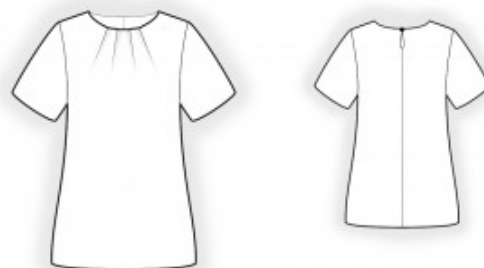
2286 Simple blouse with pleats at the neckline

Recommendations on fabric: natural/mixed fabrics suitable for blouses.

You will also need: fusible interfacing; 1 button.

CUTTING:

The word, "beam" used on some patterns means "straight of grain". Some pieces will be cut on the fold, this is noted on the pattern piece. Mark all notches and other design features such as darts, pleats etc. from the pattern onto your fabric.



Seam allowances: seam allowance for hem of garment and hem of sleeve – 2 cm; other seams 1 cm.

Main fabric:

1. Back – cut 2
2. Front – cut 1 on fold
3. Sleeve – cut 2
4. Back neck facing – cut 2
5. Front neck facing – cut 1

Fusible interfacing:

1. Back neck facing – cut 2

2. Front neck facing – cut 1

INSTRUCTIONS:

1. Apply fusible interfacing to the facings.
2. Form and baste the pleats at the front neckline, folding the pleat excess toward the center.
3. Sew the center back seam from the mark to the bottom edge. Press the seam allowances open and serge.
4. Sew the shoulder and side seams. Press the seam allowances toward the back and serge.
5. Cut (or use ready-made) bias tape 3 cm wide and 7 cm long. Fold the tape in half lengthwise and stitch 0.3 cm from the fold. Trim the seam allowances and turn the tube right side out. Adjust the loop to the required length.
6. Sew the center seam of the back neckline facing from the notch to the bottom edge and press the seam allowances open. Sew the shoulder seams of the neckline facings and press the seam allowances open. Serge the outer edge. Pin the facing to the garment, right sides together, and sew the slit edge and neckline edge, inserting the loop. Trim the corners, turn the facing to the wrong side, shape, and press. Sew on the button.
7. Sew the sleeve seams. Press the seam allowances toward the back and serge. Set the sleeves into the armholes, then serge and press.
8. Serge the garment hem and sleeve hems. Press them to the wrong side and topstitch.

Congratulations – your blouse are finished! :)