

If the pattern has a double line around it, the seam allowances are included.

Note: By default, seam allowances are NOT included (single line) and will need to be added when laying out and cutting details.

Seam Allowance: 1 cm on all seams; hem guidelines are printed on pattern.

Important! Please print all the paper patterns and lay them out at the width of fabric you plan to use (usually from 90 to 150 cm) to see how much fabric you will need.

Don't forget to take into account pieces to be duplicated or cut on a fold. When sewing the garment, pay attention to notches. They must match up with corresponding pieces.

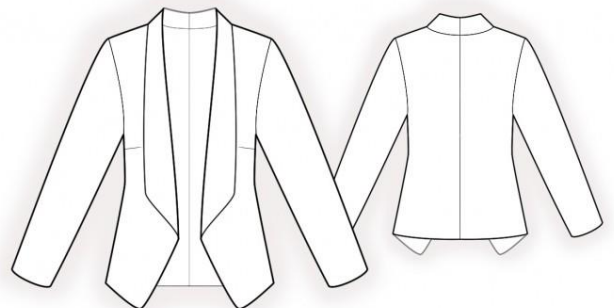
2296 Jacket with shawl collar

Recommendations on fabric: soft natural/mixed suiting fabrics. Knit fabric of small stretchiness.

You will also need: fusible interfacing.

CUTTING:

The word, "beam" used on some patterns means "straight of grain". Some pieces will be cut on the fold, this is noted on the pattern piece. Mark all notches and other design features such as darts, pleats etc. from the pattern onto your fabric.



Main fabric:

1. Back – cut 1 on fold
2. Front – cut 2
3. Sleeve – cut 2
4. Center front facing – cut 2
5. Back neck facing – cut 1

Fusible interfacing:

1. Center front facing – cut 2
2. Back neck facing – cut 1

INSTRUCTIONS:

1. Apply fusible interfacing.
2. Sew darts on front, press bulk towards top.
3. Sew collar seam, after having pinned fronts right sides together, press seam apart. Sew and press apart shoulder seams of jacket, serge. Clip into seam allowance of shoulder seam on front and sew collar into back neckline, press seam allowances towards collar.
4. Sew, clip into corner and press apart shoulder seams of back neckline facing and button-stand. Sew collar edge, press seam apart. Sew collar into neckline facings, press seam apart. Serge the outer edge of center front facings and of neckline facing.
5. Pin facings and center front facings to front right sides together and sew button-stand, neckline, and lower corner. Trim away corners, clip into curves. Fold center front facings (button-stands) onto right side, straighten seams, press. Slip stitch together seam allowances along collar seams.
6. Sew side seams, press seams towards back and serge.
7. Sew sleeve seam, press towards back and serge. Sew sleeves into armholes matching notches, serge, and press.
8. Serge hem of garment and hem of sleeve, press onto wrong side and topstitch. Sew a decorative stitch along center front edge and collar at 0.5 cm from edge.

Congratulations, your jacket is ready! :)