

If the pattern has a double line around it, the seam allowances are included.

Note: By default, seam allowances are NOT included (single line) and will need to be added when laying out and cutting details.

Seam Allowance: 1 cm on all seams; hem guidelines are printed on pattern.

Important! Please print all the paper patterns and lay them out at the width of fabric you plan to use (usually from 90 to 150 cm) to see how much fabric you will need.

Don't forget to take into account pieces to be duplicated or cut on a fold. When sewing the garment, pay attention to notches. They must match up with corresponding pieces.

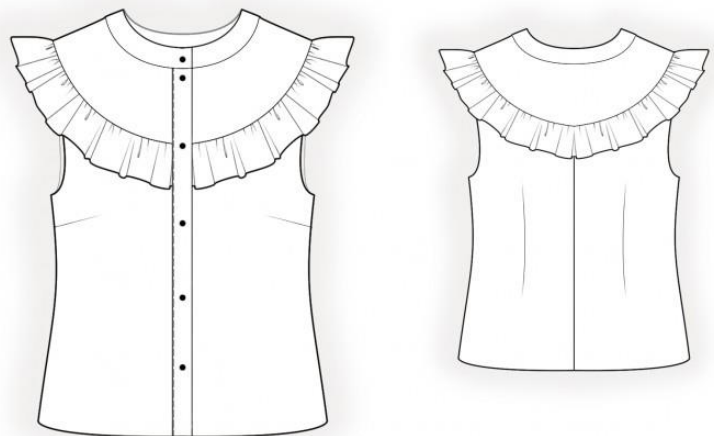
2307 Blouse with flounce

Recommendations on fabric:
natural/mixed fabrics suitable for blouses.

You will also need: 7 buttons, fusible interfacing.

CUTTING:

The word, "beam" used on some patterns means "straight of grain".
Some pieces will be cut on the fold, this is noted on the pattern piece. Mark all notches and other design features such as darts, pleats etc. from the pattern onto your fabric.



Main fabric:

1. Front – cut 2
2. Back – cut 1 on fold
3. Flounce – cut 2
4. Front yoke – cut 2
5. Back yoke – cut 1
6. Back neck facing – cut 2
7. Front neck facing – cut 4

Fusible interfacing:

1. Front neck facing – cut 2

2. Back neck facing – cut 1
3. Placket – cut 2

INSTRUCTIONS:

1. Apply fusible interfacing.
2. Sew front darts. Press bulk towards top.
3. Sew darts on back. Press bulk towards center.
4. Sew shoulder edges of front and back. Serge seams and press towards back.
5. Sew shoulder seams on yokes. Serge seams and press towards back.
6. Serge the outer edge of flounce. Fold seam allowance inside and topstitch. You may also finish the edge with bias tape or baby hem, in this case trim away the seam allowance. Sew a gathering stitch along the inner edge of flounce and gather fullness.
7. Sew yoke to front and to back, inserting flounce. Serge and press onto yoke.
8. Cut (or take ready) bias tape, its width should equal 4 cm and length should equal the length of armhole + 4 cm. Fold bias tape in half lengthwise right side out and press. Pin bias tape to armhole edge from the right side and sew. Fold bias tape onto wrong side, clip into seam allowances and topstitch onto main piece along seam. Press seam.
9. Sew side edges of front and back. Serge seams and press towards back.
10. Sew outer edge of placket to front, press seam allowances onto placket. Fold inner edge of placket inside and stitch-in-the-ditch along seam of outer placket.
11. Sew shoulder seams of neck facings. Press seam apart. Pin together facings right sides together and sew the neckline and center edges. Trim seam allowances, turn right side out and press. Sew outer neckline facings to front yoke and to back yoke. Press seam allowance towards facing. Fold under the edge of inner facings and stitch in the ditch.
12. Serge lower edge of garment, press onto wrong side and topstitch.
13. Make buttonholes and sew on buttons.

Congratulations, your blouse is ready! :)