

If the pattern has a double line around it, the seam allowances are included.

**Note:** By default, seam allowances are NOT included (single line) and will need to be added when laying out and cutting details.

Seam Allowance: 1 cm on all seams; hem guidelines are printed on pattern.

**Important!** Please print all the paper patterns and lay them out at the width of fabric you plan to use (usually from 90 to 150 cm) to see how much fabric you will need.

Don't forget to take into account pieces to be duplicated or cut on a fold. When sewing the garment, pay attention to notches. They must match up with corresponding pieces.

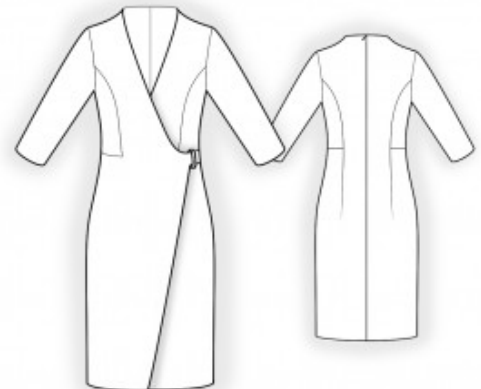
## 2368 Wrap Dress with Belt Buckle

Recommendations on fabric: natural/mixed suiting fabrics.

You will also need: fusible interfacing, dress zipper, decorative buckle.

### CUTTING:

The word, "beam" used on some patterns means "straight of grain". Some pieces will be cut on the fold, this is noted on the pattern piece. Mark all notches and other design features such as darts, pleats etc. from the pattern onto your fabric.



Seam allowances: all seams 1 cm; seam allowance for hem of dress and hem of sleeve – 3 cm.

### Main fabric:

1. Back – cut 2
2. Back side – cut 2
3. Right front – cut 1
4. Left front – cut 1
5. Front side – cut 2
6. Right center front facing – cut 1
7. Left center front facing – cut 1

8. Back neck facing – cut 2
9. Strap – cut 1
10. Sleeve – cut 2

Fusible interfacing:

1. Right center front facing – cut 1
2. Left center front facing – cut 1
3. Back neck facing – cut 2

*Pattern blocks are drafted as seen from the right side, when cutting, please place them with the text and markings down onto the fabric!*

INSTRUCTIONS:

1. Apply fusible interfacing to the back neckline facing and center front facings.
2. Sew the side back pieces to the back along the lower edges. Press the seam allowances upward and serge. Sew the side back pieces to the center back. Press the seam allowances toward the center and serge.
3. Serge the center back edges separately. Sew the center back seam from the zipper notch to the hem. Press the seam allowances open and insert the zipper.
4. Sew the side front pieces to the front pieces, clipping into the seam allowance near the corner. Press the seam allowances toward the center and serge.
5. Serge the center edge of the left front, press it to the wrong side, and topstitch.
6. Sew the shoulder seams. Clip into the curves, press the seam allowances open, and serge.
7. Sew the back neckline facing to the center front facings. Clip into the curves and press the seam allowances open. Serge the outer edge of the right center front facing. On the left center front facing, serge the outer edge and the corner up to the notch.
8. Pin the back neckline facing and center front facings to the garment, right sides together, and sew. On the left front, sew the back neckline and front neckline up to the notch. Clip into the seam allowance near the notch. On the right front, sew the back neckline, front neckline, and center front edge. Clip the seam allowances, turn the facings to the wrong side, and press.
9. Place the right front over the left front, matching the center lines. Topstitch along the horizontal joining seam on the left side, securing the left front in place.
10. Fold the strap in half lengthwise, right sides together, and sew along the long edge and one short edge. Turn right side out, shape, and press.
11. Sew the side seams, inserting the strap into the left side seam. Press the seam allowances toward the back and serge.
12. Sew the sleeve seams. Press the seam allowances toward the back and serge. Set the sleeves into the armholes, then serge and press.

13. Serge the hem of the dress and the sleeve hems. Press them to the wrong side and topstitch or hand-finish as desired.
14. Thread the strap and the extended portion of the right front through the buckle and secure by hand stitching.

Congratulations – your dress are finished! :)