

If the pattern has a double line around it, the seam allowances are included.

Note: By default, seam allowances are NOT included (single line) and will need to be added when laying out and cutting details.

Seam Allowance: 1 cm on all seams; hem guidelines are printed on pattern.

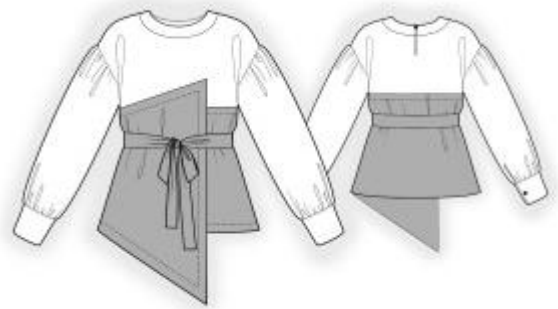
Important! Please print all the paper patterns and lay them out at the width of fabric you plan to use (usually from 90 to 150 cm) to see how much fabric you will need.

Don't forget to take into account pieces to be duplicated or cut on a fold. When sewing the garment, pay attention to notches. They must match up with corresponding pieces.

2382 Two-coloured blouse

Recommendations on fabric: cotton natural/mixed fabrics suitable for blouses in contrasting colors.

You will also need: fusible interfacing, 3 buttons.



CUTTING:

The word, “beam” used on some patterns means “straight of grain”. Some pieces will be cut on the fold, this is noted on the pattern piece. Mark all notches and other design features such as darts, pleats etc. from the pattern onto your fabric.

Seam allowances: all seams 1 cm. Seam allowance for hem of garment – 2.5 cm.

Main fabric 1:

1. Upper back – cut 1 on fold
2. Upper front – cut 1 on fold
3. Back neck facing – cut 4
4. Front neck facing – cut 2
5. Sleeve - cut 2
6. Cuff – cut 2

Main fabric 2:

1. Lower back – cut 1 on fold
2. Lower front right – cut 1

3. Lower front left – cut 1
4. Belt – cut 1

Fusible interfacing:

1. Back neck facing – cut 2
2. Front neck facing – cut 1
3. Cuff – cut 2

INSTRUCTIONS:

1. Apply fusible interfacing.
2. Cut (or take ready) a bias tape for finishing back slit, the length should be twice as much as the length of slit + 4 cm and, its width should equal 5 cm. Press bias tape in half lengthwise right side out. Mark the slit line on the back and cut. Fold back apart so that the slit line is straight, pin bias tape from the right side, matching edges, and sew. Width of seam along the slit 0.5 – 0.7 cm, decrease it to 0.2 cm in the lower part of the slit. Fold bias tape onto wrong side, wrapping the seam, and stitch in the ditch.
3. Sew back neckline facing to upper back, press seam allowances towards placket. Sew neckline facing to upper front, press seam allowances towards placket.
4. Sew shoulder seams, press seams towards back, serge.
5. Sew a gathering stitch along the upper and the lower edge of Sleeve and gather fullness. Sew in sleeve, press towards top and serge.
6. Sew sleeve edges separately. Sew the side seam of upper part, continue to see the sleeve seam up to the slit marking, press seam apart. Topstitch slit at 0.1 cm from fold.
7. Serge the lower edge of upper front.
8. Cut (or take ready) bias tape, its width should equal 2.5 cm and its length should equal 10 cm for loop buttonhole. Fold tape in half lengthwise right sides together and stitch at 0.3 cm from fold. Cut away seam allowances close to seam, turn tape right side out and straighten rolled hem. Adjust length of the loop.
9. Sew shoulder seams on inner facings, press seam apart. Serge outer edge. Pin facings to garment right sides together and sew the neckline and center back edges, inserting the button loop on the right side. Clip seam allowances, fold facing onto wrong side and stitch-in-the-ditch along seam of outer facing.

10. Pin cuffs together, right sides together and sew side edges. Start and stop stitching exactly at the marked seam line cuffs. Turn the piece right side out, press. Sew outer side of cuff to sleeve, fold inside the seam allowance of inner cuff and stitch-in-the ditch into seam of outer cuff.
11. Sew the side seams on the lower part, press seams towards back and serge. Serge upper and center edges. Sew upper part to lower part from right side edge to the center edge of left front. Make a pleat on the lower part and stitch in the ditch into the connecting seam from the right-side seam to the center edge of the left front.
12. Sew the upper corner of the right lower front, turn right side out, press. Fold under the upper seam and the center seam of the right lower part and press.
13. Serge lower edge of garment, press onto wrong side and topstitch. Pin right front onto left front, matching the center lines, and topstitch.
14. Make buttonholes on cuffs, sew on buttons. Sew on button on the left facing.
15. Fold belt in half lengthwise right sides together and sew, and leave an opening unsewn along the lower edge, so that you can turn out the piece later. Turn belt right side out, straighten and press. Topstitch belt around all edges at 0.1 cm from the edge.

Congratulations, your blouse is ready! :)