

If the pattern has a double line around it, the seam allowances are included.

Note: By default, seam allowances are NOT included (single line) and will need to be added when laying out and cutting details.

Seam Allowance: 1 cm on all seams; hem guide lines are printed on pattern.

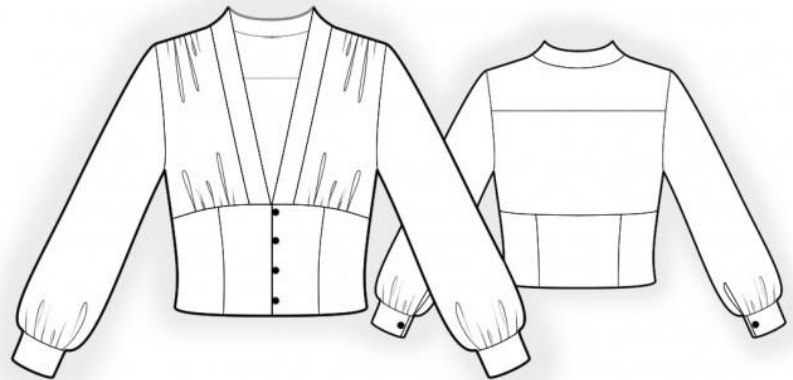
Important! Please print all the paper patterns and lay them out at the width of fabric you plan to use (usually from 90 to 150 cm) to see how much fabric you will need.

Don't forget to take into account pieces to be duplicated or cut on a fold. When sewing the garment, pay attention to notches. They must match up with corresponding pieces.

2394 Blouse with tight-fitting waist and deep v-neck

Recommendations on fabric:
natural/mixed fabrics suitable
for
blouses.

You will also need: fusible
interfacing, 6 buttons.



CUTTING:

The word, “beam” used on some patterns means “straight of grain”. Some pieces will be cut on the fold, this is noted on the pattern piece. Mark all notches and other design features such as darts, pleats etc. from the pattern onto your fabric.

Main fabric:

1. Back yoke – cut 1 on fold
2. Upper back – cut 1 on fold
3. Center back – cut 1 on fold
4. Side back – cut 2
5. Upper front – cut 2
6. Center front – cut 2
7. Side front – cut 2
8. Sleeve – cut 2

9. Cuff – cut 2
10. Center front facing – cut 2
11. Back neck facing – cut 1

Fusible interfacing:

1. Cuff – cut 2
2. Center front facing – cut 2
3. Back neck facing – cut 1

INSTRUCTIONS:

1. Apply fusible interfacing.
2. Sew side backs to center back, press towards center and serge. Sew upper back to lower part, press towards top and serge. Sew back yoke to upper back, press towards top and serge.
3. Sew center collar seam, after having pinned fronts right sides together, press seam apart. Serge the outer edge of the on-piece center front facing.
4. Sew a gathering stitch along the shoulder edge of front and gather fullness. Sew shoulder seams, press seams towards back and serge. Clip into seam allowance of shoulder seam on front and sew the outer edge of the collar into the back neckline, press seam allowances towards collar.
5. Fold the one-piece center front facing onto wrong side and press. Fold the lower part of collar onto front, slipstitch along lower edge. Sew side fronts to front, press towards center and serge. Sew a gathering stitch along the lower edge of upper front and gather fullness.
6. Serge outer edge of back neckline facing. Sew the shoulder edges of the one-piece center front facings and the back neckline facing, press seam apart. Clip into the seam allowance on shoulder on the one-piece center front facing and sew the inner side of collar into the neckline edge of back neckline facing, press seam allowances towards collar. Topstitch collars into the seam connecting to neckline.
7. Cut a bias tape its length should equal approximately 20 cm and , its width should equal 2.5 cm for loop buttonholes. Fold tape in half lengthwise right sides together and stitch at 0.3 cm from fold. Cut away seam allowances close to seam, turn tape right side out and straighten rolled hem. Cut into 4 parts. Adjust the length of buttonholes. Topstitch button loops onto right front (folds are directed away from the edge).

8. Pin buttonstand (center front facing) onto garment right sides together and sew center front edge. Sew upper front to lower front, inserting the upper part between the lower part and the center front facing. Press towards top and serge. Turn right side out center front facings onto wrong side, straighten, press.
9. Sew side seams, press seams towards back and serge.
10. Sew a gathering stitch along lower edge of sleeve and gather fullness. Sew sleeve edges separately. Sew sleeve seam from armhole up to mark for slit, press seam apart. Topstitch slit at 0.1 cm from fold. Sew sleeves into armholes, serge and press.
11. Pin cuffs together, right sides together and sew side edges. Start and stop stitching exactly at the marked seam line cuffs. Turn the piece right side out, straighten, press. Sew outer side of cuff to sleeve, turn seam allowance of inner cuff under and stitch-in-the ditch into seam of outer cuff.
12. Serge hem of garment, press onto wrong side and topstitch.
13. On left front sew on buttons. Make buttonholes and sew on buttons onto cuffs.

Congratulations, your blouse is ready! :)