

If the pattern has a double line around it, the seam allowances are included.

Note: By default, seam allowances are NOT included (single line) and will need to be added when laying out and cutting details.

Seam Allowance: 1 cm on all seams; hem guidelines are printed on pattern.

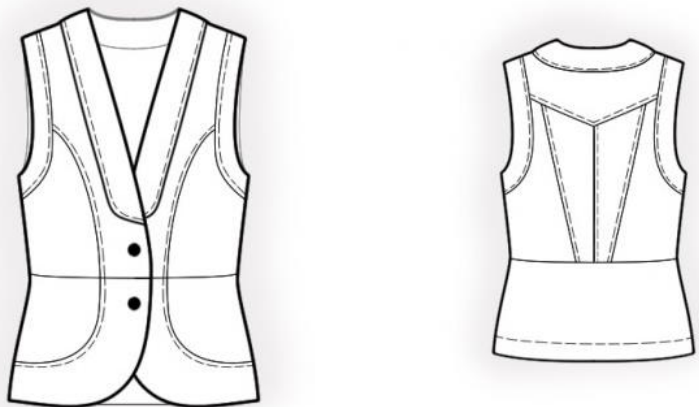
Important! Please print all the paper patterns and lay them out at the width of fabric you plan to use (usually from 90 to 150 cm) to see how much fabric you will need.

Don't forget to take into account pieces to be duplicated or cut on a fold. When sewing the garment, pay attention to notches. They must match up with corresponding pieces.

2396 Denim Vest

Recommendations on fabric:
natural/mixed jeans fabrics.

You will also need: fusible
interfacing; 2 buttons.



CUTTING:

The word, “beam” used on some patterns means “straight of grain”. Some pieces will be cut on the fold, this is noted on the pattern piece. Mark all notches and other design features such as darts, pleats etc. from the pattern onto your fabric.

Main fabric:

1. Center back – cut 2
2. Side back – cut 2
3. Back yoke – cut 1
4. Side front – cut 2
5. Center front – cut 2
6. Lower back – cut 1
7. Lower front – cut 2
8. Lower front facing – cut 4
9. Center front facing – cut 2

10. Back neck facing – cut 1
11. Back armhole facing – cut 4
12. Front armhole facing – cut 4

Fusible interfacing:

1. Lower front facing – cut 2
2. Center front facing – cut 2
3. Back neck facing – cut 1
4. Back armhole facing – cut 2
5. Front armhole facing – cut 2

INSTRUCTIONS:

1. Apply fusible interfacing.
2. Sew center back seam, press seam allowances towards left, serge. Sew a decorative stitch along the seam at 0.5 – 0.7 cm. Sew side backs to center back, press towards center, serge. Sew a decorative stitch along the seam at 0.5 – 0.7 cm.
3. Sew yoke to back, press seam allowances towards top, serge. Sew a decorative stitch along the seam at 0.5 – 0.7 cm. Sew armhole facings to back, press seam allowances at facings. Sew a decorative stitch along the seam at 0.5 – 0.7 cm. Sew upper back to lower back, press seam allowances towards top, serge. Sew a decorative stitch along the seam at 0.5 – 0.7 cm.
4. Sew side front to lower front, press seam allowances towards top, serge. Sew center front to lower facing, press seam allowances towards top, serge. Sew side upper front to center upper front, press towards center, serge. Sew a decorative stitch along the seam at 0.5 – 0.7 cm. Sew armhole facings to front, press seam allowances at facings. Sew a decorative stitch along the seam at 0.5 – 0.7 cm.
5. Sew collar edge, press seam apart. Sew shoulder seams, clip into corner, press seam allowances towards back and serge. Sew collar into neckline, press seam apart.
6. Sew collar seam on center front facings, press seam apart. Sew, clip into corner and press apart shoulder seams of back neckline facing and buttonstand. Sew front hem facings to center front facings, press seam apart. Serge outer edge. Sew collar into neckline facings, press seam apart.
7. Place center front facing onto front right sides together, pin together and sew center

front facings and collar fall of collar. Clip into curves. Turn button stands (center front edges) right side out, straighten seams, press.

Topstitch the inner facing of lower front into the seam of outer facing. Sew a decorative stitch along the ends of collar and the collar fall at 0.5 – 0.7 cm from edge.

8. Serge hem of sleeve. Sew side seams, wrapping Front with the seam allowance for hem of back. Press seams towards back, serge. Turn pieces right side out, press. Topstitch the seam allowance of hem of back onto the main piece.

9. Sew the side and the shoulder seams of the inner armhole facings. Serge outer edge. Pin facings to garment right sides together and sew the armhole edge. Clip seam allowances, fold facings onto wrong side, topstitch into the seam of outer facings.

10. On right front make buttonholes, sew on buttons on left front.

Congratulations, your vest is ready! :)