

If the pattern has a double line around it, the seam allowances are included.

Note: By default, seam allowances are NOT included (single line) and will need to be added when laying out and cutting details.

Seam Allowance: 1 cm on all seams; hem guidelines are printed on pattern.

Important! Please print all the paper patterns and lay them out at the width of fabric you plan to use (usually from 90 to 150 cm) to see how much fabric you will need.

Don't forget to take into account pieces to be duplicated or cut on a fold. When sewing the garment, pay attention to notches. They must match up with corresponding pieces.

2397 Skirt with Slit and Decorative Belt Buckle

Recommendations on fabric: natural/mixed suiting fabrics.

You will also need: fusible interfacing; 1 button; dress zipper; decorative buckle.

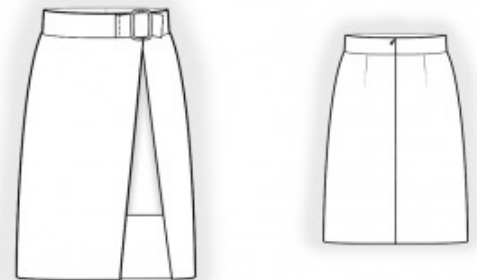
CUTTING:

The word, "beam" used on some patterns means "straight of grain". Some pieces will be cut on the fold, this is noted on the pattern piece. Mark all notches and other design features such as darts, pleats etc. from the pattern onto your fabric.

Seam allowances: all seams 1 cm. Seam allowance along the slanted edges of fly skirts – 0 cm; seam allowance along hem – 3 cm.

Main fabric:

1. Back – cut 2
2. Front right skirt – cut 1
3. Front left skirt – cut 1
4. Inner skirt – cut 1 on fold
5. Belt – cut 1
6. Fly belt – cut 1



7. Buckle belt – cut 1

Fusible interfacing:

1. Belt – cut 1
2. Fly belt – cut 1
3. Buckle belt – cut 1

INSTRUCTIONS:

1. Apply fusible interfacing to the belt. Apply fusible interfacing to the one-piece plackets on the front overlap skirt pieces.
2. Sew the darts on the back skirt pieces and press the dart excess toward the center. Serge the center back edges separately. Sew the center back seam from the zipper notch to the hem. Insert the zipper.
3. Serge the outer edge of the one-piece plackets on the overlap front pieces. Press them to the wrong side and topstitch.
4. Sew the darts on the inner skirt pieces and press the dart excess toward the center. Serge the hem allowance, turn it to the wrong side, and topstitch.
5. Pin the left skirt piece to the inner skirt and baste together along the side edges and upper edge. Place the right overlap skirt over the left overlap skirt and baste them together along the side edge and upper edge.
6. Sew the side seams. Press the seam allowances toward the back and serge.
7. Fold the belt in half lengthwise, right sides together, and sew one short edge and the corner. Start stitching exactly at the marked seam line where the belt joins the skirt. Clip into the seam allowance near the notch. Turn the belt right side out and press. Sew the outer edge of the belt to the upper edge of the skirt. Fold the inner edge under and stitch in the ditch.
8. Fold the overlap belt in half lengthwise, right sides together, and sew along the long edge and one short edge. Trim the corners, turn right side out, shape, and press. Serge the remaining short edge. Topstitch the overlap belt to the left side of the waistband, positioning the finished edge toward the left side seam. Fold the buckle strap in half lengthwise, right sides together, and sew the long edge. Turn right side out and press. Fold it in half, insert the buckle, and topstitch it to the left side of the waistband, folding the raw edges under.
9. Serge the lower edge of the skirt, press it to the wrong side, and topstitch.
10. Make a buttonhole on the shorter end of the waistband. Sew the button in the corresponding position.

Congratulations – your skirt are finished! :)