

If the pattern has a double line around it, the seam allowances are included.

**Note:** By default, seam allowances are NOT included (single line) and will need to be added when laying out and cutting details.

Seam Allowance: 1 cm on all seams; hem guidelines are printed on pattern.

**Important!** Please print all the paper patterns and lay them out at the width of fabric you plan to use (usually from 90 to 150 cm) to see how much fabric you will need.

Don't forget to take into account pieces to be duplicated or cut on a fold. When sewing the garment, pay attention to notches. They must match up with corresponding pieces.

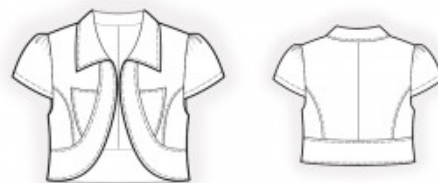
## 2399 Bolero with Short Puff Sleeves in Denim

Recommendations on fabric: natural/mixed denim fabric.

You will also need: fusible interfacing.

### CUTTING:

The word, “beam” used on some patterns means “straight of grain”. Some pieces will be cut on the fold, this is noted on the pattern piece. Mark all notches and other design features such as darts, pleats etc. from the pattern onto your fabric.



Seam allowances: all seams 1 cm. Seam allowance for hem of sleeve – 2 cm.

### Main fabric:

1. Center back – cut 2
2. Side back – cut 2
3. Center front – cut 2
4. Side front – cut 2
5. Collar – cut 2
6. Sleeve – cut 2
7. Front facing – cut 4
8. Back facing – cut 2
9. Pocket – cut 2

### Fusible interfacing:

1. Front facing – cut 2
2. Back facing – cut 1
3. Collar – cut 1

## INSTRUCTIONS:

1. Apply fusible interfacing.
2. Sew the center back seam. Serge and press towards the left. Sew a decorative stitch 0.5 cm from the seam. Sew side backs to the center back, serge seams, and press towards the center. Sew a decorative stitch 0.5 cm from the seam.
3. Fold under the upper and side seam allowances of the false pocket and press. Topstitch the pocket onto the front according to the markings.
4. Sew side fronts to the front, serge seams, and press towards the center. Sew a decorative stitch 0.5 cm from the seam.
5. Sew the side and shoulder edges of the bolero. Serge seams and press towards the back.
6. Sew the side edges of the facings. Press the seam apart. Pin the facings right sides together and sew the outer edge. Clip seam allowances, turn right side out, and press. Sew a decorative stitch 0.5 cm from the seam. Sew the outer facing to the front and back. Fold under the seam allowance of the inner facing and stitch-in-the-ditch along the seam of the outer facing. Sew a decorative stitch 0.5 cm from the seam.
7. Pin the collars together, right sides together, and sew the collar ends and collar fall. Clip into curves and trim away corners. Turn the collar right side out, straighten, and press. Sew the upper collar into the neckline. Fold under the seam allowance of the lower collar and stitch-in-the-ditch into the seam of the upper collar. Sew a decorative stitch 0.5 cm from the seam.
8. Serge the hem of the sleeve, fold it to the wrong side, and topstitch. Sew a gathering stitch along the upper edge of the sleeve cap and gather fullness. Sew the sleeve into the armhole. Serge and press.
9. Cut or use ready-made bias tape, 4 cm wide and the length of the lower armhole + 4 cm. Fold the bias tape in half lengthwise, right side out, and press. Pin the bias tape to the edge of the armhole from the right side and sew. Clip into seam allowances. Fold the bias tape onto the wrong side and topstitch it onto the main piece along the seam. Press the seam.

Congratulations – your bolero are finished! :)