

If the pattern has a double line around it, the seam allowances are included.

Note: By default, seam allowances are NOT included (single line) and will need to be added when laying out and cutting details.

Seam Allowance: 1 cm on all seams; hem guidelines are printed on pattern.

Important! Please print all the paper patterns and lay them out at the width of fabric you plan to use (usually from 90 to 150 cm) to see how much fabric you will need.

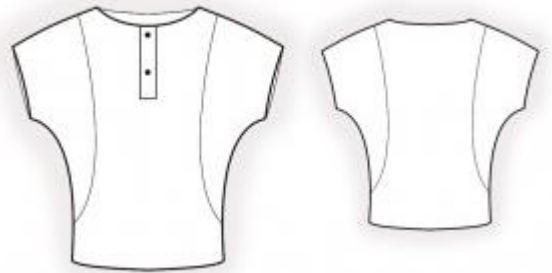
Don't forget to take into account pieces to be duplicated or cut on a fold. When sewing the garment, pay attention to notches. They must match up with corresponding pieces.

2401 Blouse with batwing sleeves and decorative seams.

Recommendations on fabric: natural/mixed knit fabric of medium stretchiness.

You will also need: 2 buttons.

CUTTING:



The word, “beam” used on some patterns means “straight of grain”. Some pieces will be cut on the fold, this is noted on the pattern piece. Mark all notches and other design features such as darts, pleats etc. from the pattern onto your fabric.

Seam allowances: Seam allowance for hem of garment – 2 cm, seam allowance for hem of sleeve – 1.2 cm, other seams – 0.7 cm.

Main fabric:

1. Back - cut 1 on fold
2. Front - cut 1 on fold
3. Side back - cut 2
4. Side front – cut 2
5. Placket – cut 1

INSTRUCTIONS:

1. Sew side fronts to front. Serge and press onto front. Side and lower turn under the seam

allowance of placket and press. Pin placket onto front and topstitch according to markings.

2. Sew side backs to backs. Serge seams and press towards back.

3. Sew right shoulder seam. Press seam allowance towards back and serge.

4. Cut (or take ready) bias tape, its width should equal 4 cm and length should equal the length of neckline + 4 cm. Fold bias tape in half lengthwise right side out and press. Pin bias tape to neckline from the right side, leaving loose ends, and sew. Fold bias tape onto wrong side, clip into seam allowances and topstitch onto main piece along the seam. Press seam.

5. Sew and serge left shoulder seam. Press seam allowance towards back.

6. Sew side seams processing the sleeve seam at the same time, press seams towards back and serge.

7. Serge hem of garment and hem of sleeve, press onto wrong side and topstitch.

8. Sew on buttons at placket.

Congratulations, your blouse is ready! :)