

If the pattern has a double line around it, the seam allowances are included.

Note: By default, seam allowances are NOT included (single line) and will need to be added when laying out and cutting details.

Seam Allowance: 1 cm on all seams; hem guidelines are printed on pattern.

Important! Please print all the paper patterns and lay them out at the width of fabric you plan to use (usually from 90 to 150 cm) to see how much fabric you will need.

Don't forget to take into account pieces to be duplicated or cut on a fold. When sewing the garment, pay attention to notches. They must match up with corresponding pieces.

2407 Dress with Pleated Yoke

Recommendations on fabric: thick natural/mixed knit fabric of small stretchiness.

You will also need: knit fusible interfacing, dress zipper.

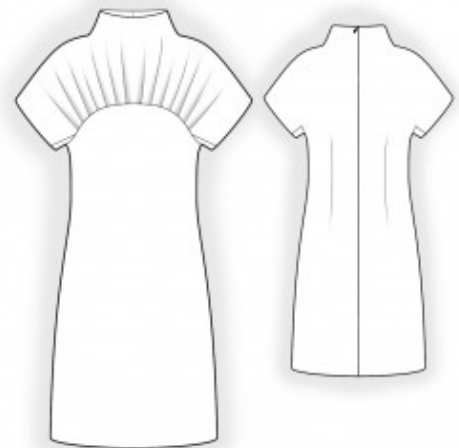
CUTTING:

The word, "beam" used on some patterns means "straight of grain". Some pieces will be cut on the fold, this is noted on the pattern piece. Mark all notches and other design features such as darts, pleats etc. from the pattern onto your fabric.

Seam allowances: all seams 1 cm. Seam allowance for hem of garment – 2 cm.

Main fabric:

1. Back - cut 2
2. Upper front – cut 1 on fold
3. Lower front – cut 1 on fold
4. Gore – cut 2
5. Front neck facing – cut 1
6. Back neck facing – cut 2



Fusible interfacing:

1. Front neck facing – cut 1
2. Back neck facing – cut 2

INSTRUCTIONS:

Advice: sew knit pieces with special elastic/zig-zag stitches. If you use an overlock, cut seam allowances to 0.6-0.8 cm width. Topstitch hem allowances with double needle to save elasticity.

1. Serge the center back edges separately. Sew the center back seam from the zipper notch to the hem. Press the seam allowances open. Insert the zipper.
2. Form the pleats on the upper front and baste them along the lower edge. Sew the yoke to the upper front. Serge the seam allowances and press them toward the yoke.
3. Sew the side seams. Serge the seam allowances and press them toward the back.
4. Sew the horizontal princess seam, attaching the yoke at the same time. Clip into the corner of the seam allowance on the back. Serge the seam allowances and press them downward.
5. Sew the shoulder seams, continuing along the edges of the one-piece collar. Clip into the curves. Serge the shoulder seam area and press the seam allowances toward the back.
6. Sew the shoulder seams of the facings. Clip the seam allowances and serge the lower edge. Pin the neckline facings to the garment, right sides together, and sew the neckline. Turn the facings to the wrong side and press. Slipstitch the facings to the shoulder seams and zipper tape by hand.
7. Serge the garment hem, press it to the wrong side, and topstitch.

Congratulations – your dress are finished! :)