

If the pattern has a double line around it, the seam allowances are included.

Note: By default, seam allowances are NOT included (single line) and will need to be added when laying out and cutting details.

Seam Allowance: 1 cm on all seams; hem guidelines are printed on pattern.

Important! Please print all the paper patterns and lay them out at the width of fabric you plan to use (usually from 90 to 150 cm) to see how much fabric you will need.

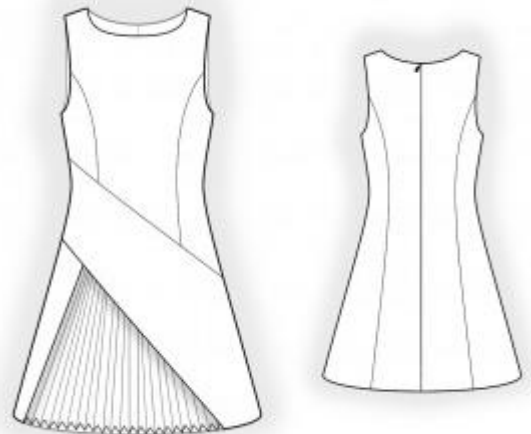
Don't forget to take into account pieces to be duplicated or cut on a fold. When sewing the garment, pay attention to notches. They must match up with corresponding pieces.

2442 Dress with pleated insert

Recommendations on fabric: natural/mixed fabric suitable for dresses. Plisse fabric for inset. You will also need: fusible interfacing; dress zipper.

CUTTING:

The word, "beam" used on some patterns means "straight of grain". Some pieces will be cut on the fold, this is noted on the pattern piece. Mark all notches and other design features such as darts, pleats etc. from the pattern onto your fabric.



Seam allowances: all seams 1 cm; seam allowance for hem of dress – 2.5 cm. Seam allowance for hem of inset – 1 cm.

Main fabric:

1. Center back - cut 2
2. Side back - cut 2
3. Upper center front – cut 1
4. Upper side front right - cut 1
5. Upper side front left - cut 1
6. Middle front - cut 1
7. Lower front - cut 1
8. Hem facing 1 - cut 1

9. Hem facing 2 - cut 1
10. Back facing - cut 2
11. Front facing - cut 1

Main fabric 1:

1. Inset – cut 1

Fusible interfacing:

1. Hem facing 1 - cut 1
2. Hem facing 2 - cut 1
3. Back facing - cut 2
4. Front facing - cut 1

INSTRUCTIONS:

1. Apply fusible interfacing.
2. Sew side backs to center back, press seams towards center and serge.
3. Serge separately center back edges. Sew center back seam from notch for zipper to bottom, press seam apart. Sew in zipper.
4. Sew side front to center front, press seams towards center and serge.
5. Serge seam allowance for hem of inset, press onto wrong side and topstitch. You may also finish it with thin rolled hem. In this case, cut away the seam allowance for hem.
6. Pin hem facing 1 to lower front and sew front edge. Fold facing onto wrong side, straighten, press. Sew inset to inner edge of facing 1 (the edge of inset is shorter than the edge of facing by the width of seam allowance for hem), press seam, serge.
7. Pin hem facing 2 to middle front and sew lower edge. Fold facing onto wrong side, straighten, press. Sew inner edge of facing 2 to the inset with lower front (the edge of inset is shorter than the edge of facing by the width of seam allowance for hem), press seam, serge.
8. Sew upper front to lower front, press towards top and serge.
9. Sew side and shoulder seams, press seams towards back and serge.
10. Sew shoulder and side edges of front facing and back facings, press seam apart. Serge

outer edge. Pin facings to garment right sides together and sew the neckline. Sew armhole in two steps: first the back armhole, and then the front armhole. Clip seam allowances, fold facing onto wrong side, straighten, press. Slip stitch to the main piece along the side seams and zipper tape.

11. Serge lower edge of dress, sew the lower corners, press onto wrong side and topstitch or hem as desired. Also slip stitch the inner edges of hem facing 1 and hem facing 2 to the main piece.

Congratulations, your dress is ready :)