

If the pattern has a double line around it, the seam allowances are included.

Note: By default, seam allowances are NOT included (single line) and will need to be added when laying out and cutting details.

Seam Allowance: 1 cm on all seams; hem guidelines are printed on pattern.

Important! Please print all the paper patterns and lay them out at the width of fabric you plan to use (usually from 90 to 150 cm) to see how much fabric you will need.

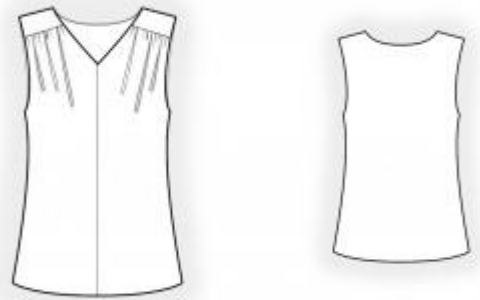
Don't forget to take into account pieces to be duplicated or cut on a fold. When sewing the garment, pay attention to notches. They must match up with corresponding pieces.

2444 Top with yoke and gathers

Recommendations on fabric: thin natural/mixed fabrics suitable for blouses.

CUTTING:

The word, "beam" used on some patterns means "straight of grain". Some pieces will be cut on the fold, this is noted on the pattern piece. Mark all notches and other design features such as darts, pleats etc. from the pattern onto your fabric.



Seam allowances: all seam allowances – 1 cm. Seam allowance for hem of garment – 2 cm.

Main fabric:

1. Back - cut 1 on fold
2. Front - cut 2
3. Front yoke - cut 2

INSTRUCTIONS:

1. Sew a gathering stitch along upper edge of front and gather fullness. Sew yoke to front, press seam allowances towards top and serge.
2. Sew shoulder seams, press seams towards back and serge.
3. Cut or use ready-made bias tape, its width should equal 4 cm and length should equal

the length of neckline + 5 cm. Fold bias tape in half lengthwise right side out and press. Pin bias tape to neckline from the right side and sew. Clip into seam allowances. Fold bias tape onto wrong side and topstitch onto main piece along the seam. Press seam.

4. Sew center seam on front, press seam allowances towards left and serge.

5. Cut or use ready-made bias tape, its width should equal 4 cm and length should equal the length of armhole + 4 cm. Fold bias tape in half lengthwise right side out and press. Pin bias tape onto armhole edge from the right side and sew, fold bias tape onto wrong side and topstitch onto main piece along the seam.

6. Sew side seams, press seams towards back and serge.

7. Serge lower edge of garment, press onto wrong side and topstitch.

Congratulations, your top is ready! :)