

If the pattern has a double line around it, the seam allowances are included.

**Note:** By default, seam allowances are NOT included (single line) and will need to be added when laying out and cutting details.

Seam Allowance: 1 cm on all seams; hem guidelines are printed on pattern.

**Important!** Please print all the paper patterns and lay them out at the width of fabric you plan to use (usually from 90 to 150 cm) to see how much fabric you will need.

Don't forget to take into account pieces to be duplicated or cut on a fold. When sewing the garment, pay attention to notches. They must match up with corresponding pieces.

## 2447 Wrapover blouse

Recommendations on fabric: natural/mixed fabric suitable for dresses.

You will also need: fusible interfacing; 5 buttons.

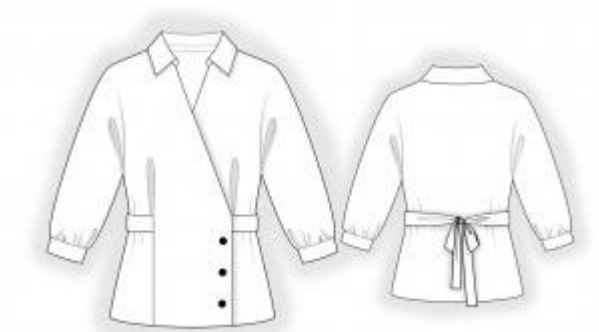
### CUTTING:

The word, "beam" used on some patterns means "straight of grain". Some pieces will be cut on the fold, this is noted on the pattern piece. Mark all notches and other design features such as darts, pleats etc. from the pattern onto your fabric.

Seam allowances: all seam allowances – 1.0 cm. Seam allowance for hem of garment – 1.5 cm.

### Main fabric:

1. Back – cut 1 on fold
2. Front - cut 2
3. Center front facing - cut 2
4. Cuff - cut 2
5. Collar – cut 2
6. Stand collar – cut 2
7. Back neck facing – cut 2
8. Belt – cut 2



Fusible interfacing:

1. Collar - cut 1
2. Stand collar – cut 1
3. Cuff – cut 2
4. Center front facing – cut 2
5. Back neck facing – cut 1

INSTRUCTIONS:

1. Apply fusible interfacing.
2. Fold belt in half lengthwise right sides together and sew longer edge and one shorter edge. Trim away corners, turn right side out and press.
3. Sew princess seam of right front, inserting belt according to notches. Serge. Sew princess seam of left front. Serge.
4. Serge side edges separately, serging the sleeve edges at the same time. Sew side edges, sewing the sleeve edges at the same time, from bottom to the mark for slit. Press seam apart.
5. Sew shoulder edges, sewing the sleeve edges at the same time. Press seams towards back and serge.
6. Pin together collars right sides together and sew ends and collar fall. Trim seam allowances, turn the collar right side out, straighten and press. Sew a decorative stitch around all edges. Pin together parts of stand collar, right sides together and sew, inserting collar. Start and stop stitching exactly at the marked seam of stand collar into neckline. Trim seam allowances, turn stand collar right side out and press.
7. Pin belt, right side down, onto right side of the right front and sew together along the center edge of front.
8. Sew shoulder edges of center front facing and of the back neckline facings. Press seam apart. Serge outer edge. Pin Center Front facing onto front and onto back and sew center front facings and neckline, inserting stand collar. Clip seam allowances, fold center front facing and facing onto wrong side. Slipstitch pieces together along the shoulder seams.
9. Sew a gathering stitch along lower edge of sleeve and gather fullness.
10. Fold cuff in half lengthwise, right sides together and sew shorter edges cuffs. Trim

seam allowances, turn right side out and press. Sew outer side of cuff to sleeve, fold inside the seam allowance of inner cuff and stitch-in-the ditch into seam of outer cuff. 11. Serge the lower edge of garment, press onto wrong side and topstitch.

12. Make buttonholes and sew on buttons on fronts and on cuffs. Make the inner button hole. Sew on inner button.

Congratulations, your blouse is ready :)