

If the pattern has a double line around it, the seam allowances are included.

Note: By default, seam allowances are NOT included (single line) and will need to be added when laying out and cutting details.

Seam Allowance: 1 cm on all seams; hem guidelines are printed on pattern.

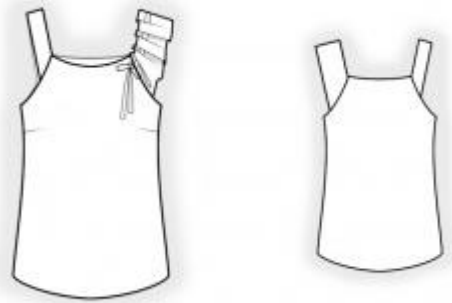
Important! Please print all the paper patterns and lay them out at the width of fabric you plan to use (usually from 90 to 150 cm) to see how much fabric you will need.

Don't forget to take into account pieces to be duplicated or cut on a fold. When sewing the garment, pay attention to notches. They must match up with corresponding pieces.

2460 Top with asymmetrical straps

Recommendations on fabric: draping natural/mixed fabrics suitable for blouses.

You will also need: fusible interfacing, 6 grommets, decorative tape.



CUTTING:

The word, “beam” used on some patterns means “straight of grain”. Some pieces will be cut on the fold, this is noted on the pattern piece. Mark all notches and other design features such as darts, pleats etc. from the pattern onto your fabric.

Seam allowances: all seams 1 cm. Seam allowance along the lower edge of the garment – 2 cm.

Main fabric:

1. Back - cut 1 on fold
2. Front – cut 1 on fold
3. Strap right – cut 1
4. Strap left back – cut 1
5. Strap left front – cut 1
6. Back facing – cut 1
7. Front facing – cut 1

Fusible interfacing:

1. Back facing – cut 1
2. Front facing – cut 1

INSTRUCTIONS:

1. Apply fusible interfacing. Also apply fusible interfacing to the area under the grommet of the left strap.
2. Sew front darts, press bulk towards top.
3. Fold the right strap in half lengthwise right sides together and sew the longer edge. Turn right side out strap onto right side, straighten, press.
4. Cut decorative tape in two parts. Sew front left and back left straps along shoulder edge, inserting decorative tape, press seam apart. Fold the left strap in half lengthwise right sides together and sew the longer edge. Turn right side out strap onto right side, straighten, press. Install grommets according to markings.
5. Serge outer edge of front neckline facing. Pin facing onto front, right side down, and sew the neckline and the armhole, inserting straps in between the pieces and inserting decorative tape on the left. Clip seam allowances, fold facing onto wrong side, straighten and press.
6. Serge outer edge of back neckline facing. Pin facing onto front, right side down, and sew the neckline and the armhole, inserting straps in between the pieces. Clip seam allowances, fold facing onto wrong side, straighten and press.
7. Sew side seams, press seams towards back and serge.
8. Cut (or take ready) bias tape, its width should equal 4 cm and length should equal the length of lower armhole + 4 cm. Fold bias tape in half lengthwise right side out and press. Pin bias tape onto armhole edge from the right side and sew. Fold bias tape onto wrong side, clip into seam allowances and topstitch onto main piece along the seam. Press seam.
9. Serge hem of garment, press onto wrong side and topstitch.
10. Thread in decorative tape into grommets and slipstitch.

Attention! Before sewing on the straps, put on the garment and adjust the length of straps!

Congratulations, your top is ready! :)



Model 2460

pattern from pppp.dk