

If the pattern has a double line around it, the seam allowances are included.

Note: By default, seam allowances are NOT included (single line) and will need to be added when laying out and cutting details.

Seam Allowance: 1 cm on all seams; hem guidelines are printed on pattern.

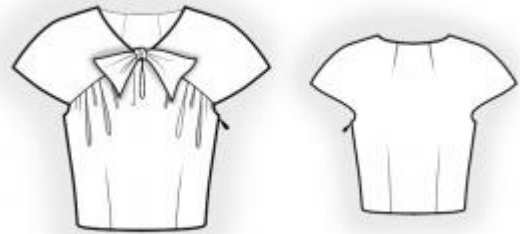
Important! Please print all the paper patterns and lay them out at the width of fabric you plan to use (usually from 90 to 150 cm) to see how much fabric you will need.

Don't forget to take into account pieces to be duplicated or cut on a fold. When sewing the garment, pay attention to notches. They must match up with corresponding pieces.

2461 Blouse with bow.

Recommendations on fabric: Natural/mixed fabrics suitable for blouses.

You will also need: Separating zipper.



CUTTING:

The word, "beam" used on some patterns means "straight of grain". Some pieces will be cut on the fold, this is noted on the pattern piece. Mark all notches and other design features such as darts, pleats etc. from the pattern onto your fabric.

Seam allowances: all seams 1 cm. Along the lower edge of the garment – 1.5 cm.

Main fabric:

1. Back - cut 1 on fold
2. Front yoke – cut 4
3. Front – cut 1 on fold.

INSTRUCTIONS:

1. Sew darts on back. Press bulk towards center.

2. Cut or use ready-made bias tape, its width should equal 4 cm and length should equal the length of back neckline + 4 cm. Fold bias tape in half lengthwise right side out and press. Pin bias tape to neckline from the right side and sew. Clip into seam allowances. Fold bias tape onto wrong side and topstitch onto main piece along the seam. Press seam.
3. Sew right side edge. Serge and press towards back. Serge the seam allowances of the left side edge separately. Sew in zipper.
4. Finish the right armhole of blouse and the left armholes of front and of back: Cut or use ready-made bias tape, its width should equal 4 cm and length should equal the length of armhole + 4 cm. Fold bias tape in half lengthwise right side out and press. Pin bias tape to armhole edge from the right side and sew. Clip into seam allowances. Fold bias tape onto wrong side and topstitch onto main piece along the seam. Press seam.
5. Cut (or take ready) a bias tape for finishing slit on Front, its length should equal the double length of slit + 4 cm and, its width should equal 5 cm. Press bias tape in half lengthwise right side out. Mark the line of slit on Front, slash. Straighten the slit on Front into a straight line, pin the bias tape from the right side, matching edges, and sew. Width of seam along the slit 0.5 – 0.7 cm, decrease it to 0.2 cm in the lower part of the slit.

Fold bias tape onto wrong side, wrapping the seam, and stitch in the ditch.
6. Pin front yokes together, right sides together, baste together along edges and sew the neckline and the bow up to the marking of seam to the front. Sew the armhole edge. Clip seam allowances, clip into seam allowance near notch, turn right side out and press.
7. Sew shoulder seams, inserting the back between the front yokes.
8. Sew a gathering stitch along upper edge of front and gather fullness. Press the outer front yoke towards front. Fold inside seam allowance of inner yoke and topstitch into the seam of outer yoke (stitch-in-the-ditch).
9. Serge lower edge of garment. Press onto wrong side and topstitch

Congratulations, your blouse is ready! :)