

If the pattern has a double line around it, the seam allowances are included.

Note: By default, seam allowances are NOT included (single line) and will need to be added when laying out and cutting details.

Seam Allowance: 1 cm on all seams; hem guidelines are printed on pattern.

Important! Please print all the paper patterns and lay them out at the width of fabric you plan to use (usually from 90 to 150 cm) to see how much fabric you will need.

Don't forget to take into account pieces to be duplicated or cut on a fold. When sewing the garment, pay attention to notches. They must match up with corresponding pieces.

2477 Short Jacket with Batwing Sleeves

Recommendations on fabric: thin coat or natural/mixed suiting fabrics.

You will also need: fusible interfacing, decorative closing.

CUTTING:

The word, "beam" used on some patterns means "straight of grain". Some pieces will be cut on the fold, this is noted on the pattern piece. Mark all notches and other design features such as darts, pleats etc. from the pattern onto your fabric.

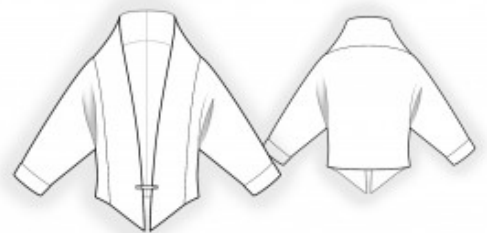
Seam allowances: all seams 1 cm. Seam allowance along the lower edge on back and on side front – 2.5 cm.

Main fabric:

1. Back – cut 2
2. Side front – cut 2
3. Center front – cut 4
4. Cuff – cut 2

Fusible interfacing:

1. Center front – cut 2



2. Cuff – cut 2

INSTRUCTIONS:

1. Apply fusible interfacing.
2. Sew the center back seam. Serge the seam allowances and press them toward the left.
3. Sew the upper sleeve seam. Serge the seam allowances and press them toward the back.
4. Sew the side seams and sleeve seams. Serge the seam allowances and press them toward the back.
5. Serge the hem allowance, turn it to the wrong side, and topstitch (or finish the hem with blind stitches).
6. Pin the center front pieces together, right sides facing, and sew the center collar seam. Press the seam allowances open. Pin the center front pieces together, right sides facing, and sew the center front edge and lower edges. Clip the seam allowances and trim the corners. Pin the outer front facing to the garment and sew along the center front edge and neckline. Fold the seam allowance of the inner facing under and stitch in the ditch.
7. Sew the cuff into a ring and press the seam allowances open. Pin the cuff to the sleeve, right sides together, and sew. Fold the cuff to the wrong side and press. Turn the cuff seam allowance under by 1 cm and topstitch it to the sleeve.
8. Sew on the decorative closure.

Congratulations – your jacket are finished! :)