

If the pattern has a double line around it, the seam allowances are included.

Note: By default, seam allowances are NOT included (single line) and will need to be added when laying out and cutting details.

Seam Allowance: 1 cm on all seams; hem guidelines are printed on pattern.

Important! Please print all the paper patterns and lay them out at the width of fabric you plan to use (usually from 90 to 150 cm) to see how much fabric you will need.

Don't forget to take into account pieces to be duplicated or cut on a fold. When sewing the garment, pay attention to notches. They must match up with corresponding pieces.

2478 Shirt Dress with Elastic Waist

Recommendations on fabric: natural/mixed knit fabric of medium stretchiness.

You will also need: knit bias tape; elastic tape, its width should equal 0.5 cm.

CUTTING:

The word, "beam" used on some patterns means "straight of grain". Some pieces will be cut on the fold, this is noted on the pattern piece. Mark all notches and other design features such as darts, pleats etc. from the pattern onto your fabric.

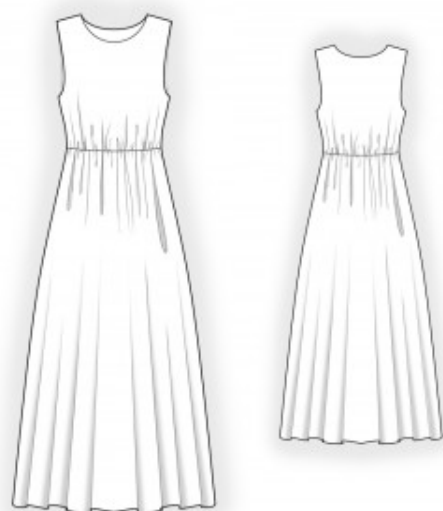
Seam allowances: seam allowance for hem of garment – 2 cm, other seams – 1 cm.

Main fabric:

1. Upper back – cut 1 on fold
2. Lower back – cut 1 on fold
3. Upper front – cut 1 on fold
4. Lower front – cut 1 on fold

INSTRUCTIONS:

Advice: sew knit pieces with special elastic/zig-zag stitches. If you use an overlock, cut



seam allowances to 0.6-0.8 cm width. Topstitch hem allowances with double needle to save elasticity.

1. Sew the right shoulder seam. Press the seam allowances toward the back and serge.
2. Cut or use ready-made bias tape 4 cm wide and long enough to match the neckline length plus 4 cm. Fold the bias tape in half lengthwise, right side out, and press. Pin the bias tape to the neckline from the right side and sew. Fold the bias tape to the wrong side and topstitch along the seam from the right side.
3. Sew the left shoulder seam. Press the seam allowances toward the back and serge.
4. Cut or use ready-made bias tape 4 cm wide and long enough to match the armhole length plus 4 cm. Fold the bias tape in half lengthwise, right side out, and press. Pin the bias tape to the armhole edge from the right side and sew. Fold the bias tape to the wrong side and topstitch along the seam from the right side.
5. Sew the side seams of the upper and lower parts of the garment. Press the seam allowances toward the back and serge.
6. Sew a gathering stitch along the upper edge of the lower part of the garment and gather the fullness evenly. Sew the upper part to the lower part. Serge the seam allowances and press.
7. Serge the garment hem, press it to the wrong side, and topstitch.
8. Cut a piece of elastic tape equal to the waist circumference minus 5 cm. Topstitch it to the seam allowance joining the upper and lower parts of the garment, stretching the elastic evenly as required.

Congratulations – your dress are finished! :)