

If the pattern has a double line around it, the seam allowances are included.

Note: By default, seam allowances are NOT included (single line) and will need to be added when laying out and cutting details.

Seam Allowance: 1 cm on all seams; hem guidelines are printed on pattern.

Important! Please print all the paper patterns and lay them out at the width of fabric you plan to use (usually from 90 to 150 cm) to see how much fabric you will need.

Don't forget to take into account pieces to be duplicated or cut on a fold. When sewing the garment, pay attention to notches. They must match up with corresponding pieces.

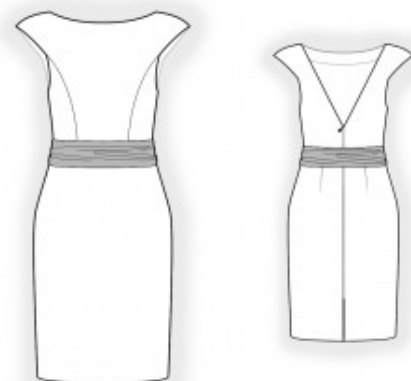
2480 Dress with a Deep Back Neckline

Recommendations on fabric: natural/mixed fabric suitable for dresses. Fabric in contrasting color for decoration.

You will also need: dress zipper; fusible interfacing; 3 hooks and eyes.

CUTTING:

The word, "beam" used on some patterns means "straight of grain". Some pieces will be cut on the fold, this is noted on the pattern piece. Mark all notches and other design features such as darts, pleats etc. from the pattern onto your fabric.



Seam allowances: all seams 1 cm. Seam allowance for hem – 3 cm; seam allowance along the slit on lower back – 2 cm.

Main fabric:

1. Upper back – cut 2
2. Lower back – cut 2
3. Side upper front – cut 2
4. Center upper front – cut 1 on fold
5. Lower front – cut 1 on fold
6. Back opening facing – cut 2

7. Front neck facing – cut 1

Main fabric 1:

1. Belt – cut 1

Fusible interfacing:

1. Back opening facing – cut 2
2. Front neck facing – cut 1

INSTRUCTIONS:

1. Apply fusible interfacing to the facings.
2. Sew the princess seams on the upper front pieces. Press the seam allowances toward the center and serge. Sew the darts on the lower back pieces and press the dart excess toward the center.
3. Sew the upper back to the lower back. Press the seam allowances upward and serge. Sew the upper front to the lower front. Press the seam allowances upward and serge.
4. Serge the center back edges separately. Sew the center back seam from the zipper notch to the slit notch. Press the seam allowances open, pressing the slit at the same time. Insert the zipper. Topstitch the slit 0.1 cm from the folded edge.
5. Sew the shoulder seams. Press the seam allowances toward the back and serge.
6. Sew the shoulder seams of the back opening facing and front neckline facing. Press the seam allowances open and serge the outer edge. Pin the facings to the garment, right sides together, and sew the front neckline and back opening. Turn the facings to the wrong side, shape the edges, and press. Slipstitch the facings to the garment along the shoulder seams and center back seam.
7. Cut (or use ready-made) bias tape 4 cm wide and long enough to match the armhole length plus 4 cm. Fold the bias tape in half lengthwise, right side out, and press. Pin the bias tape to the armhole edge from the right side and sew. Fold the bias tape to the wrong side, clip into the seam allowances, and topstitch along the seam from the right side. Press.
8. Sew the side seams. Press the seam allowances toward the back and serge.
9. Serge the garment hem, press it to the wrong side, and finish with blind stitches.
10. Form and baste the pleats on the belt. Fold the belt in half lengthwise, right sides together, and sew three edges, inserting the hook-and-eye closure into the center edges. Leave an opening along the lower edge for turning. Turn the belt right side out, shape, and press. Sew the opening closed.

Congratulations – your dress are finished! :)