

If the pattern has a double line around it, the seam allowances are included.

Note: By default, seam allowances are NOT included (single line) and will need to be added when laying out and cutting details.

Seam Allowance: 1 cm on all seams; hem guidelines are printed on pattern.

Important! Please print all the paper patterns and lay them out at the width of fabric you plan to use (usually from 90 to 150 cm) to see how much fabric you will need.

Don't forget to take into account pieces to be duplicated or cut on a fold. When sewing the garment, pay attention to notches. They must match up with corresponding pieces.

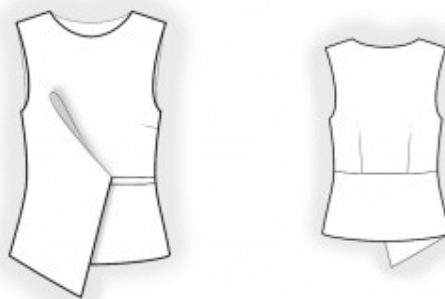
2481 Blouse with Asymmetrical Pleats on the Front

Recommendations on fabric: natural/mixed fabrics suitable for blouses.

You will also need: dress zipper, fusible interfacing.

CUTTING:

The word, “beam” used on some patterns means “straight of grain”. Some pieces will be cut on the fold, this is noted on the pattern piece. Mark all notches and other design features such as darts, pleats etc. from the pattern onto your fabric.



Seam allowances: all seams 1 cm. Seam allowance along hem – 1.5 cm.

Main fabric:

1. Upper back – cut 1 on fold
2. Lower back – cut 1
3. Upper front – cut 1
4. Lower front – cut 1
5. Back neck facing – cut 1
6. Front neck facing – cut 1
7. Inset – cut 1

Fusible interfacing:

1. Back neck facing – cut 2
2. Front neck facing – cut 2

INSTRUCTIONS:

1. Sew the darts on the back and press the dart excess toward the center.
2. Sew the lower back to the upper back. Serge the seam allowances and press them upward.
3. Sew the dart on the front and press the dart excess upward.
4. Clip into the seam allowance at the lower pleat marking on the lower overlapping front piece. Serge the slanted edge of the overlapping front piece. Fold the seam allowance to the wrong side and topstitch.
5. Serge the center edge of the lower front. Fold the seam allowance to the wrong side and topstitch. Fold the inset in half lengthwise, wrong sides together, and press. Pin the inset to the lower front, matching the edges, and baste along the upper edge.
6. Slipstitch the pleat seam allowances together. Fold the overlapping front piece upward. Pin the upper and lower front pieces together, right sides facing, and sew the waist seam. Serge the seam allowances and press them upward. Slipstitch the slanted overlapping front piece to the lower front from the wrong side.
7. Sew the shoulder seams. Press the seam allowances toward the back and serge.
8. Sew the shoulder seams of the neckline facings. Press the seam allowances open and serge the outer edge. Pin the facings to the garment, right sides together, and sew the neckline. Clip into the curves, turn the facings to the wrong side, shape, and press. Sew a decorative topstitch 0.5 cm from the neckline edge.
9. Cut or use ready-made bias tape 4 cm wide and long enough to match the armhole length plus 4 cm. Fold the bias tape in half lengthwise, right side out, and press. Pin the bias tape to the armhole edge from the right side and sew. Clip into the seam allowances. Fold the bias tape to the wrong side and topstitch along the seam from the right side. Press.
10. Serge the left side edges separately. Sew the left side seam from the armhole to the zipper notch and from the zipper notch to the hem. Press the seam allowances open. Insert the zipper.
11. Sew the right side seam. Press the seam allowances toward the back and serge.
12. Serge the lower edge of the garment, press it to the wrong side, and topstitch.

Congratulations – your blouse are finished! :)