

If the pattern has a double line around it, the seam allowances are included.

Note: By default, seam allowances are NOT included (single line) and will need to be added when laying out and cutting details.

Seam Allowance: 1 cm on all seams; hem guidelines are printed on pattern.

Important! Please print all the paper patterns and lay them out at the width of fabric you plan to use (usually from 90 to 150 cm) to see how much fabric you will need.

Don't forget to take into account pieces to be duplicated or cut on a fold. When sewing the garment, pay attention to notches. They must match up with corresponding pieces.

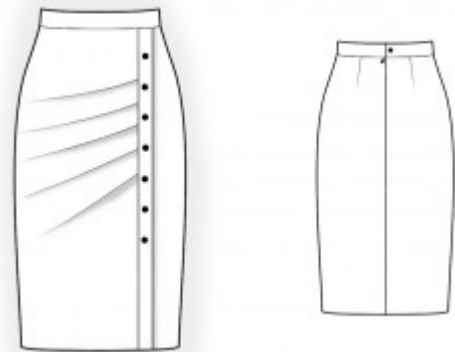
2494 Skirt with pleats in front

Recommendations on fabric: soft natural/mixed suiting fabrics.

You will also need: fusible interfacing; 1 dress zipper; 8 buttons.

CUTTING:

The word, "beam" used on some patterns means "straight of grain". Some pieces will be cut on the fold, this is noted on the pattern piece. Mark all notches and other design features such as darts, pleats etc. from the pattern onto your fabric.



Seam allowances: all seams 1 cm. Seam allowance along the hem of front skirts, back skirts and plackets – 3 cm.

Main fabric:

1. Back – cut 2
2. Right front skirt – cut 1
3. Left front skirt – cut 1
4. Placket right – cut 1
5. Placket left – cut 2
6. Belt – cut 2

Fusible interfacing:

1. Belt – cut 2

INSTRUCTIONS:

1. Apply fusible interfacing to belt.
2. Sew darts on back, press bulk towards center.
3. Serge center edges of backs separately. Sew center seam from notch for zipper down to hem, press seam apart. Sew in zipper.
4. Pin left plackets together, right sides together, and sew the inner seam from notch to hem. Clip into seam allowance near the notch, turn right side out placket onto right side, straighten, press.
5. Sew left placket to front left skirt, press towards skirt, serge.
6. Make and baste pleats on right front skirt. The bulk is directed towards top. Fold the right placket in half lengthwise and press, right side out. Sew right front skirt to right placket to left front skirt, the right placket is in the middle. Press towards right skirt, serge.
7. Sew side seams, press seam allowances towards back and serge.
8. Sew outer side of belt to upper edge of skirt, press seam allowances towards belt. Sew ends of belt, trim corners and turn right side out. Fold under the inner edge of the belt and topstitch it into the seam of the outer belt from the right side (stitch-in-the-ditch). Press the belt.
9. Serge lower edge of skirt, press onto wrong side and topstitch.
10. Mark buttonhole on the belt and make the buttonhole, sew on button. Sew on buttons onto the right placket, fixing it to the left placket.

Congratulations, your skirt is ready! :)